

19



ISSN: 2319-765X

IOSR

Journal of Mathematics

Volume 10, Issue 5, Version 2
September-October 2014



IOSR Journals
International Organization
of Scientific Research

IOSR Journal of Mathematics (IOSR-JM) is a double blind peer reviewed international journal that provides publication of articles in all areas of mathematics and its applications. The journal welcomes publications of high quality papers on theoretical developments and practical applications in mathematics. Original research papers, state-of-the-art reviews, and high quality technical notes are invited for publications.

Executive Editor	: Habibah Al-Husain, Egypt
e-ISSN	: 2278-5728
p-ISSN	: 2319-765X
Publication Frequency	: 6 issue per year
Publisher	: International Organization of Scientific Research (IOSR)
Paper Submission	: iosrjm@gmail.com

Managing Editorial Board

Alok Darshan Kothiyal, *H.N.B. Grahwal Central, University Srinagar, India*
Maryam Talib Aldossary, *University of Dammam, Saudi Arabia*
Hasibun Naher, *Universiti Sains Malaysia, Malaysia*
Md. Abul Kalam Azad, *University of Rajshahi, Bangladesh*

International Editorial Board

Uttam Kumar Khedlekar, *Sagar Central University MP, India*
Gauri Shanker Sao, *Central University of Bilaspur, India*
B. Selvaraj, *Periyar University, India*
Kishor R. Gaikwad, *N.E.S., Science College of Nanded, India*
M. Ali Akbar, *University of Rajshahi, Bangladesh*
Kuldeep Narain Mathur, *Universiti Utara Malaysia, Malaysia*
Mohana Sundaram Muthuvalu, *Universiti Teknologi Petronas, Malaysia*
Ram Naresh, *Harcourt Butler Technological Institute, Kanpur, India*
Basant Kumar Jha, *Ahmadu Bello University, Nigeria*
Jitendra Kumar Soni, *Bundelkhand University, Jhansi, India*
M.K. Mishra, *EGS PEC Nagapattnam, Anna University, Chennai, India*
Manoj Kumar Patel, *NIT, Nagaland, Dimapur, India*
Sunil Kumar, *NIT, Jamshedpur, India*
Suresh Kumar Sharma, *Punjab University, Chandigarh, India*
Pradeep J. Jha, *L.J. Institute of Engineering and Technology, India*
Xueyong Zhou, *Xinyang Normal University, China*



IOSR Journals
International Organization
of Scientific Research

International Organization of Scientific Research (IOSR) is a registered independent Organization, a unit of CSIR delivering supports and services to education professionals and researchers around world, especially those from the developing countries. IOSR is the association of scientists, research scholars, professors, directors, managers, engineers, pharmacy, and persons of various fields like engineering, management, pharmacy, applied science, and mathematics. IOSR helps the researchers free of cost by providing right direction in their research with the help of its worldwide research association members.

IOSR Journal of Mathematics

IOSR Journals is a self-supporting organization and does not receive funding from any institution/government. Hence, the operation of the journal is solely financed by the processing fees received from authors. The processing fees are required to meet operations expenses such as employees, salaries, internet services, electricity, etc. Being an Open Access Journal, IOSR Journals does not receive payment for subscription as the journals are freely accessible over the internet. It costs money to produce a peer-reviewed, edited, and formatted article that is ready for online publication, and to host it on a server that is freely accessible without barriers around the clock. We ask that—as a small part of the cost of doing the research—the author, institution, or funding agency pays a modest fee to help cover the actual cost of the essential final step, the publication. The manuscript handling charges is INR3200 or equivalently USD75. If author wants to hard copy of Journal, they required to pay extra charges INR600 or USD45. The fee includes all review, publication, indexing and certificates hard copy charges. There are no any other hidden extra charges.

How to deposit fees? If you belong to China/India/Australia/New Zealand/Thailand, you can deposit fees by choosing anyone of following options: (1) Depositing fees directly by near bank branch to the account given in acceptance letter by your net-banking a/c to the account given in acceptance letter. Authors from Australia/China/India/New Zealand/Thailand cannot pay by PayPal. (2) Online Registration Payment: Authors from all other the countries can pay by their credit cards.

Manuscript preparation guidelines: <http://www.iosrjournals.org/doc/Paper Template.doc>.

Indexed/Abstracted:

NASA @ IOSR Journals



The SAO/NASA Astrophysics Data System (ADS) is a Digital Library portal for researchers in Astronomy and Physics, operated by the Smithsonian Astrophysical Observatory (SAO) under a NASA grant. Now all published paper in IOSR Journals will available on NASA - Astrophysics Data System (ADS) Digital Library.

Cross Ref @ IOSR Journals



CrossRef is a not-for-profit membership association whose mission is to enable easy identification and use of trustworthy electronic content by promoting the cooperative development and application of a sustainable infrastructure.

ARXIV.ORG @ IOSR Journals



The arXiv (arXiv.org), a project by Cornell University Library, provides open access to over a third of a million e-prints in physics, mathematics, computer science and quantitative biology. Many quality articles of IOSR Journals are indexed in arXiv Database.

Cabell's @ IOSR Journals



Cabell Publishing, Inc., was founded in 1978, our goal is to help professors, graduate students and researchers to publish their manuscripts in academic journals. To achieve this objective the company strives to maintain current contact information and websites for a large number of journals.

Index Copernicus @ IOSR Journals



IC Journals is a journal indexing, ranking and abstracting site. This service helps a journal to grow from a local level to a global one as well as providing complete web-based solution for small editorial teams. IC Journals helps to professionally manage your journal from your location.

J-Gate @ IOSR Journals



J-Gate is an electronic gateway to global e-journal literature. Launched in 2001 by Informatics India Limited, J-Gate provides seamless access to millions of journal articles available online offered by 11,428 publishers. It presently has a massive database of journal literature, indexed from 36,987 e-journals with links to full text at publisher sites. J-Gate also plans to support online subscription to journals, electronic document delivery, archiving and other related services.

Ulrich Web @ IOSR Journals



Ulrich's™ is the authoritative source of bibliographic and publisher information on more than 300,00 periodicals of all types academic and scholarly journals, Open Access publications, peer-reviewed titles, popular magazines, newspapers, newsletters and more from around the world.

Ebsco Host @ IOSR Journals



As the world's largest intermediary between publishers and libraries, EBSCO offers many benefits to publisher partners. EBSCO is the only database aggregator that is also a subscription agent. As a result, the company has a unique understanding of the needs and concerns of publishers, and offers various ways for publishers to gain exposure for their publications.

Google Scholar @ IOSR Journals



Google Scholar provides a simple way to broadly search for scholarly literature. From one place, you can search across many disciplines and sources: articles, theses, books, abstracts and court opinions, from academic publishers, professional societies, online repositories, universities and other web sites.

ANED @ IOSR Journals



IOSR journals are member of American National Engineering Database (ANED). All published papers will index in this database and will get permanent ANED-DDL (Digital Data Link) to individual article.

JOUR Informatics @ IOSR Journals



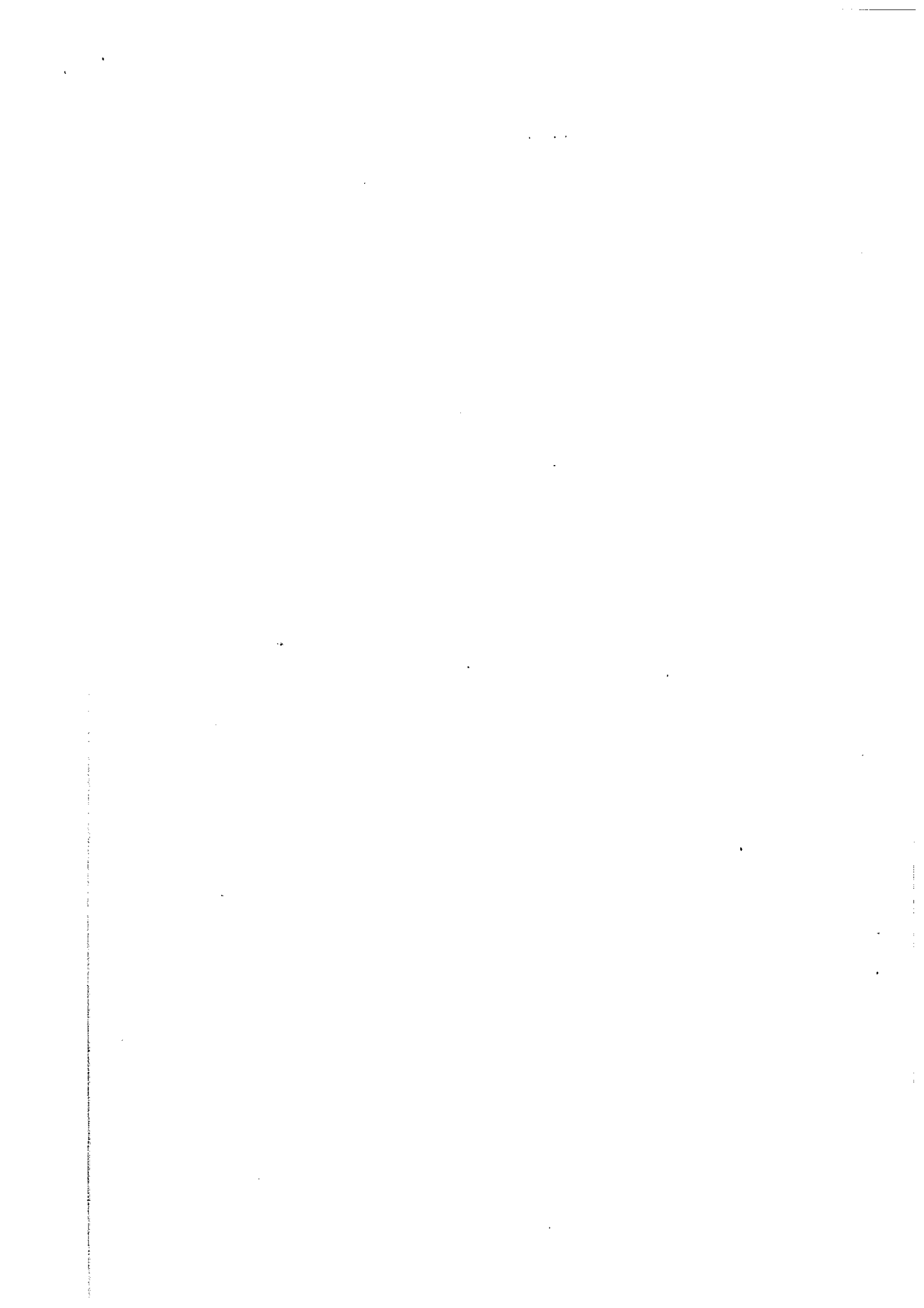
JOUR Informatics is a non-profitable organization. It is a medium for introducing the Journals to the researchers. This service helps researchers to finding appropriate Journal for referencing and publishing their quality paper. In this global world, there are lots of Journals. So it is very difficult to find best relevant Journal which can be useful for us. Here anybody can find and also check the quality of particular Journal by Jour Informatics Rating, decided based on the different critical analytical parameters.

Journal Hard Copy Subscription

No	Name of Journal	Periodicity per year	Annual Subscription charges	
1	IOSR Journal of Computer Engineering (IOSR-JCE)	6	3600 INR	250 USD
2	IOSR Journal of Electrical and Electronics Engineering (IOSR-JEEE)	6	3600 INR	250 USD
3	IOSR Journal of Mechanical and Civil Engineering (IOSR-JMCE)	6	3600 INR	250 USD
4	IOSR Journal of Electronics and Communication Engineering (IOSR-JECE)	6	3600 INR	250 USD
5	IOSR Journal of VLSI and Signal Processing (IOSR-JVSP)	6	3600 INR	250 USD
6	IOSR Journal of Environmental Science, Toxicology and Food Technology (IOSR-JESTFT)	6	3600 INR	250 USD
7	IOSR Journal of Humanities and Social Science (IOSR-JHSS)	6	3600 INR	250 USD
8	IOSR Journal of Pharmacy and Biological Sciences (IOSR-JPBS)	6	3600 INR	250 USD
9	IOSR Journal of Business and Management (IOSR-JBM)	6	3600 INR	250 USD
10	IOSR Journal of Dental and Medical Sciences (IOSR-IDMS)	6	3600 INR	250 USD
11	IOSR Journal of Agriculture and veterinary Science (IOSR-JAVS)	6	3600 INR	250 USD
12	IOSR Journal of Applied Physics (IOSR-JAP)	6	3600 INR	250 USD
13	IOSR Journal of Applied Chemistry (IOSR-JAC)	6	3600 INR	250 USD
14	IOSR Journal of Mathematics (IOSR-JM)	6	3600 INR	250 USD
15	IOSR Journal of Nursing and Health Science (IOSR-JNHS)	6	3600 INR	250 USD
16	IOSR Journal of Research & Methods in Education (IOSR-JRME)	6	3600 INR	250 USD
17	IOSR Journal of Applied Geology and Geophysics (IOSR-JAGG)	6	3600 INR	250 USD
18	IOSR Journal of Economics and Finance (IOSR-JEF)	6	3600 INR	250 USD

The subscribers from India have to pay fees by demand draft or cheque in the favor of "International Organization of Scientific Research" payable at Ghaziabad along with following subscription form ([http://www.iosrjournals.org/doc/Form for indian subscriber.pdf](http://www.iosrjournals.org/doc/Form%20for%20indian%20subscriber.pdf)). The subscribers from other than India can deposit fees by PayPal, Western Union Transfer or net banking option. For more detail of account information of Journal, mail us at iosrjournals@gmail.com.

(c) 2014 IOSR Journal of Mathematics
www.iosrjournals.org/iosr-jm.html



Sirs-Si Model of Malaria Disease with Application of Vaccines, Anti-Malarial Drugs, and Spraying

Randita Gustian Putri, Jaharuddin, Toni Bakhtiar
(Department of Mathematics, Bogor Agricultural University,
Jl. Meranti, Kampus IPB Darmaga, Bogor 16680, Indonesia)

Abstract: Malaria is a deadly disease transmitted to humans through the bite of infected female mosquitoes. It can also be transmitted from an infected mother (congenitally) or through blood transfusion. In this paper, we discussed the transmission of malaria featuring in the framework of an SIRS-SI model with treatments are given to humans and mosquitoes. We here utilized the use of vaccines, the use of anti-malarial drugs, and the use of spraying as treatment efforts. A stability analysis was then performed and numerical simulation was provided to clarify the result. It is shown that treatments affect the dynamics of human and mosquito populations. In addition, we proposed the Homotopy Analysis Method (HAM) to construct the approximate solution of the model.

Keywords: HAM, Malaria model, SIRS-SI model, Stability analysis, Treatment

I. Introduction

Malaria is an infectious disease caused by a parasite known as plasmodium. Carrier of plasmodium parasite is the female anopheles mosquito that causes the destruction of red blood cells in humans and animals through bites. Malaria can be transmitted through blood transfusion, sharing needles, or congenital.

Many researchers have developed a mathematical model of malaria transmission. SIR with nonlinear infection rate and the use of vaccination against the human population was analyzed by [1]. In this model it was assumed that the vaccination at the right time can cause susceptible human beings vaccinated can move directly to recovered class. The effect of treatment as a control variable on malaria transmission system was studied in the framework of optimal control theory by [2]. Model of malaria transmission was investigated in [3] by considering the existence of human-to-human transmission through blood transfusions and through malaria-infected pregnant women (congenital).

In this current work, we discuss the effectiveness of the use of drugs in a malaria transmission model based on [3]. Modification of the model is done by considering the assumption that humans belong to recovered class have possibility to be susceptible, i.e., we consider a SIRS-SI model [4]. Moreover, we also consider the application of vaccine and spraying as introduced in [5,6]. Stability analysis is then performed to reveal the effects of treatments on population dynamics. Additionally we also propose the use of the homotopy analysis method in providing an approximate solution of the model.

II. Mathematical Model

In constructing the model we employ the following assumptions. We assume that the human population is divided into three classes, namely susceptible human S_h , infected human I_h , and recovered human R_h , while the mosquito population is grouped into two classes: susceptible mosquito S_m and infected mosquito I_m . Individuals who are born and migrate to the susceptible class has a constant rate of λ_h . Humans in susceptible class can move into the infected class due to blood transfusion at a rate of $a\beta_1$ (with a is average number of blood transfusion per unit time and β_1 is the chances of disease transmission to susceptible human from infected human) or by an infected mosquito bite at a rate of $b\beta_2$ (with b is average number of infected mosquito bites on susceptible human per unit time and β_2 is the chances of disease transmission from infected mosquitoes to susceptible humans). Humans in susceptible class can move into the recovered class due to vaccination at a rate of θ . Humans insusceptible class may die at a rate of μ_h . A newborn baby can be infected malaria due to congenital with a rate of η . Humans in infected class can move to the recovered class due to the use of anti-malarial drugs with a rate of $k\gamma$ (with k is the rate of human recovery and γ is the effectiveness of anti-malarial drugs). Humans in infected class can die at a rate of μ_h and death due to malaria at a rate of α . Humans in recovered class (R_h) can die at a rate of μ_h .

Furthermore, mosquitoes are born and migrate to susceptible class with a constant rate of λ_m . Mosquitoes in susceptible class may move into the infected class for biting infected humans at a rate of $c\beta_3$ (with c is average number of susceptible mosquito bites on infected humans per unit time and β_3 is the chances of disease transmission from infected humans to susceptible mosquitoes) or can die at a rate μ_m . Mosquitoes in susceptible class and infected class can die because the use of spraying at a rate of ρ . Mosquitoes

in infected class can die at a rate μ_m . Compartmental diagram of the model is illustrated in Fig.1 and its dynamical equations are formulated by system (1) as follows:

$$\begin{aligned} \frac{dS_h}{dt} &= \lambda_h + \sigma R_h - (a\beta_1 I_h + b\beta_2 I_m)S_h - (\theta + \mu_h)S_h, \\ \frac{dI_h}{dt} &= \eta I_h + (a\beta_1 I_h + b\beta_2 I_m)S_h - (\mu_h + \alpha + k\gamma)I_h, \\ \frac{dR_h}{dt} &= k\gamma I_h - (\mu_h + \sigma)R_h + \theta S_h, \\ \frac{dS_m}{dt} &= \lambda_m - (c\beta_3 I_h + \mu_m + \rho)S_m, \\ \frac{dI_m}{dt} &= c\beta_3 I_h S_m - (\mu_m + \rho)I_m. \end{aligned} \tag{1}$$

III. Stability Analysis

A. Equilibrium State

Equilibrium points can be obtained by simultaneously solving the following equations:

$$\frac{dS_h}{dt} = \frac{dI_h}{dt} = \frac{dR_h}{dt} = \frac{dS_m}{dt} = \frac{dI_m}{dt} = 0.$$

System (1) has two types of equilibrium points, namely disease-free equilibrium point x_{dfe} and endemic equilibrium point x_{ee} . It is easy to verify that

$$x_{dfe}(S_h, I_h, R_h, S_m, I_m) = (S_h^*, 0, R_h^*, S_m^*, 0), \tag{2}$$

where

$$S_h^* = \frac{\lambda_h(\mu_h + \sigma)}{\mu_h(\theta + \sigma + \mu_h)}, R_h^* = \frac{\lambda_h\theta}{\mu_h(\theta + \sigma + \mu_h)}, S_m^* = \frac{\lambda_m}{\mu_m + \rho},$$

and

$$x_{ee}(S_h, I_h, R_h, S_m, I_m) = (S_h^{**}, I_h^{**}, R_h^{**}, S_m^{**}, I_m^{**}), \tag{3}$$

where

$$\begin{aligned} S_h^{**} &= \frac{\lambda_h + \sigma R_h^{**}}{a\beta_1 I_h^{**} + b\beta_2 I_m^{**} + \theta + \mu_h}, I_h^{**} = \frac{b\beta_2 I_m^{**} S_h^{**}}{\mu_h + k\gamma + \alpha - a\beta_1 S_h^{**} - \eta}, R_h^{**} = \frac{\theta S_h^{**} + k\gamma I_h^{**}}{\mu_h + \sigma}, \\ S_m^{**} &= \frac{\lambda_m}{c\beta_3 I_h^{**} + \mu_m + \rho}, I_m^{**} = \frac{c\beta_3 I_h^{**} S_m^{**}}{\mu_m + \rho}. \end{aligned}$$

B. Basic Reproduction Number

Basic reproductive number R_0 is denoted by the expectation value of the number of infections per unit time. This infection occurs in a susceptible population produced by one infected individual. To determine the basic reproduction number we use the next generation matrix approach [7]. Based on system (1), we may define matrices F and V as follow

$$F = \begin{pmatrix} \frac{a\beta_1 \lambda_h (\mu_h + \sigma)}{\mu_h (\theta + \sigma + \mu_h)} & \frac{b\beta_2 \lambda_h (\mu_h + \sigma)}{\mu_h (\theta + \sigma + \mu_h)} \\ \frac{c\beta_3 \lambda_m}{\mu_m + \rho} & 0 \end{pmatrix}, V = \begin{pmatrix} -\eta + \mu_h + \alpha + k\gamma & 0 \\ 0 & \mu_m + \rho \end{pmatrix}.$$

Basic reproductive number R_0 is the largest positive eigen values of the matrix $K = FV^{-1}$, from which we obtain

$$R_0 = \frac{b_1 + \sqrt{b_1^2 + 4b_2b_3}}{2}, \tag{4}$$

where

$$\begin{aligned} b_1 &= \frac{a\beta_1 \lambda_h (\mu_h + \sigma)}{\mu_h (\theta + \sigma + \mu_h) (-\eta + \mu_h + \alpha + k\gamma)}, b_2 = \frac{b\beta_2 \lambda_h (\mu_h + \sigma)}{(\mu_m + \rho) \mu_h (\theta + \sigma + \mu_h)}, \\ b_3 &= \frac{c\beta_3 \lambda_m}{(\mu_m + \rho) (-\eta + \mu_h + \alpha + k\gamma)}. \end{aligned}$$

According to the basic reproduction number we say that: if $R_0 < 1$ then the number of infected individuals will decrease with each generation, so that the disease will not spread, and if $R_0 > 1$ then the number of infected individuals will increase with each generation, so that the disease will spread.

C. Simulation

In this simulation, the population dynamics are observed in conditions such that $R_0 < 1$. Thus we would like to show the effect of vaccination, anti-malarial drug, and spraying in a situation where the disease doesn't spread. The selection of parameters is relied on the studies conducted by various reliable sources. Based on [2] we use the following values $\mu_h = 0.0004, \mu_m = 0.04, \sigma = 1/730, \alpha = 0.05$. According to [8] we have: $\lambda_h = 0.027, b = 0.13, \beta_2 = 0.010, \beta_3 = 0.072$, and from [1] we have $k = 0.611$. The following parameter values are assumed based on the most common situation $\lambda_m = 0.13, a = 0.038, c = 0.022, \beta_1 = 0.02, \rho \in [0,1], \theta \in [0,1], \eta = 0.005, \gamma \in [0.01,1], S_h(0) = 40, I_h(0) = 2, R_h(0) = 0, S_m(0) = 500, I_m(0) = 10$.

1) Simulation of the effectiveness of the use anti-malarial drugs

Simulation is performed to demonstrate the effectiveness of the use of anti-malaria drugs on human populations and mosquito populations. In this case, it will be shown that an increase or decrease in the value of the parameter γ can alter the basic reproduction number R_0 defined in (4). The change in value of γ and thus R_0 can be seen in Table 1. In the human population, as shown in Fig.2, if the effectiveness of the use of anti-malarial drugs is increased, then it increases the number of susceptible humans as well as the number of recovered humans, but it decreases the number of infected humans. The use of anti-malarial drugs given to human has also an impact on the mosquito population, as shown in Fig.3. The same treatment on γ causes a decrease in the number of infected mosquitoes but an increase in the number of susceptible mosquitoes. Increasing or decreasing in the number of humans and mosquitoes in each class tend to be equal to any increase in the effectiveness of the use of anti-malarial drugs. The maximum number of infected humans and mosquitoes occurs at $t = 25$ days. At this point, the effectiveness level of 20% can reduce the number of infected humans up to 23.81% of the total human population and can reduce the number of infected mosquitoes up to 5.88%.

2) Simulation of the effectiveness of the use vaccine

In this part we demonstrate the effectiveness of the use of vaccines on human and mosquito populations. It is assumed that infected humans treated with anti-malarial drugs by 10%. In this case, it will be shown the effect of parameters θ and the basic reproduction number R_0 to the population dynamics. The change in value of the parameters θ and R_0 can be seen in Table 2. In the human population, as shown in Fig.4, if the effectiveness of the vaccine is improved and the other parameters are fixed, then the number of humans in susceptible and recovered classes are increased. It indirectly causes a decrease in the number of human in infected class. While, in the mosquito population as shown in Fig.5, improvement on vaccine effectiveness indirectly decreases the number of mosquito in infected class.

3) Simulation of the use effectiveness of the use spraying

Now we demonstrate the effectiveness of the use of spraying on human populations and mosquito populations. In this case we still assumed that infected humans consume anti-malarial drugs by 10% and we show the effect of parameter ρ and R_0 on population dynamics. The change in value of the parameter ρ and R_0 can be seen in Table 3. In Fig.6 we can see that an improvement on the effectiveness of spraying increases the number of susceptible humans, but decreases the numbers of infected and recovered humans. Meanwhile, toward the vector population, the same treatment decreases the population in both classes as spraying is aimed to mosquitoes.

IV. Application Of The Homotopy Analysis Method

Based on [9], this section discusses the utilization of the so-called homotopy analysis method to derive an approximate solution of the SIRS-SI model of malaria disease. With respect to system (1), we define the following linear operators \mathcal{L}_i ($i = 1,2,3,4,5$) and nonlinear operators \mathcal{N}_i ($i = 1,2,3,4,5$):

$$\mathcal{L}_i[\bar{\phi}(t; q)] = \frac{d\phi_i(t; q)}{dt}, i = 1,2,3,4,5, \tag{5}$$

$$\begin{aligned} \mathcal{N}_1(\bar{\phi}) &= \frac{d\phi_1}{dt} - \lambda_h - \sigma\phi_3 + (a\beta_1\phi_2 + b\beta_2\phi_5)\phi_1 + (\theta + \mu_h)\phi_1, \\ \mathcal{N}_2(\bar{\phi}) &= \frac{d\phi_2}{dt} - \eta\phi_2 - (a\beta_1\phi_2 + b\beta_2\phi_5)\phi_1 + (\mu_h + k\gamma + \alpha)\phi_2, \\ \mathcal{N}_3(\bar{\phi}) &= \frac{d\phi_3}{dt} - k\gamma\phi_2 + (\mu_h + \sigma)\phi_3 - \theta\phi_1, \\ \mathcal{N}_4(\bar{\phi}) &= \frac{d\phi_4}{dt} - \lambda_m + (c\beta_3\phi_2 + \mu_m + \rho)\phi_4, \\ \mathcal{N}_5(\bar{\phi}) &= \frac{d\phi_5}{dt} - c\beta_3\phi_2\phi_4 + (\mu_m + \rho)\phi_5. \end{aligned} \tag{6}$$

In (5) $q \in [0,1]$ is a parameter and $\bar{\phi} = (\phi_1, \phi_2, \phi_3, \phi_4, \phi_5)$ is a function that depends on t and q . Based on (5) and (6) we then construct zero-order deformations as follow:

$$(1 - q)\mathcal{L}_i[\phi_i(t, q) - \phi_{i,0}(t)] = qh\mathcal{N}_i[\phi_i(t, q)], i = 1,2,3,4,5. \quad (7)$$

with h is an auxiliary variable. In (7), if $q = 0$ and $q = 1$, then from (7) we have $\phi_i(t, 0) = \phi_{i,0}(t)$ and $\phi_i(t, 1) = \phi_i(t)$. Using the concept of Taylor series, $\phi_i(t; q)$, $i = 1,2,3,4,5$, can be decomposed into

$$\phi_i(t, q) = \phi_{i,0}(t) + \sum_{n=1}^{\infty} \phi_{i,n}(t)q^n,$$

where

$$\phi_{i,n}(t) = \frac{1}{n!} \left. \frac{d^n \phi_i(t, q)}{dq^n} \right|_{q=0} \quad (8)$$

If $q = 1$, equation (8) becomes

$$\phi_i(t, 1) = \phi_{i,0}(t) + \sum_{n=1}^{\infty} \phi_{i,n}(t), i = 1,2,3,4,5.$$

Next, for $i = 1,2,3,4,5$, set the n -th order equations as follows

$$\mathcal{L}[\phi_{i,n}(t) - \chi_n \phi_{i,n-1}(t)] = hR_{i,n}(\bar{\phi}_{i,n-1}), i = 1,2,3,4,5, \quad (9)$$

where

$$R_{1,n} = \frac{d}{dt} \phi_{1,n-1} - \lambda_h(1 - \chi_n) - \sigma \phi_{3,n-1} + a\beta_1 \sum_{k=0}^{n-1} \phi_{1,k} \phi_{2,n-1-k} + b\beta_2 \sum_{k=0}^{n-1} \phi_{1,k} \phi_{5,n-1-k} + (\theta + \mu_h) \phi_{1,n-1},$$

$$R_{2,n} = \frac{d}{dt} \phi_{2,n-1} - \eta \phi_{2,n-1} - a\beta_1 \sum_{k=0}^{n-1} \phi_{1,k} \phi_{2,n-1-k} - b\beta_2 \sum_{k=0}^{n-1} \phi_{1,k} \phi_{5,n-1-k} + (\mu_h + k\gamma) \phi_{2,n-1},$$

$$R_{3,n} = \frac{d}{dt} \phi_{3,n-1} - k\gamma \phi_{2,n-1} + (\mu_h + \sigma) \phi_{3,n-1} - \theta \phi_{1,n-1},$$

$$R_{4,n} = \frac{d}{dt} \phi_{4,n-1} - \lambda_m(1 - \chi_n) + c\beta_3 \sum_{k=0}^{n-1} \phi_{4,k} \phi_{2,n-1-k} + (\mu_m + \rho) \phi_{4,n-1},$$

$$R_{5,n} = \frac{d}{dt} \phi_{5,n-1} - c\beta_3 \sum_{k=0}^{n-1} \phi_{4,k} \phi_{2,n-1-k} + (\mu_m + \rho) \phi_{5,n-1},$$

with $\chi_n = 0$ for $n \leq 1$ and $\chi_n = 1$ for $n > 1$.

We also employ the following initial values: $\phi_{1,0}(t) = S_h(0) = 40$, $\phi_{2,0}(t) = I_h(0) = 2$, $\phi_{3,0}(t) = R_h(0) = 0$, $\phi_{4,0}(t) = S_m(0) = 500$, $\phi_{5,0}(t) = I_m(0) = 10$.

The solution to the n -th order of (8) is

$$\phi_{i,n}(t) = \chi_n \phi_{i,n-1}(t) + h \int R_{i,n}(\bar{\phi}_{i,n-1}). \quad (10)$$

Thus, the approximate solution of the model up to the order of N is expressed as follows

$$\phi_i(t) = \sum_{n=0}^N \phi_{i,n}(t). \quad (11)$$

Therefore an approximate solution of system (1) can be derived by homotopy analysis method according to the following procedures:

1. For a given model represented by a system of differential equations, define a series of linear operators (5) and nonlinear operators (6).
2. Determine a set of n -th order equations given in (9) including their initial values and then solve (10).
3. Construct an approximate solution ϕ_i according to (11) up to order N .

From (10) and (11), the approximate solution obtained by homotopy analysis method depends not only on a time variable t but also on an auxiliary variable h . The later variable should be selected in order to provide a proper approximate solution. The selection of auxiliary variables h obtained by homotopy solution twice lowered to q then evaluated at $q = 0$. Curves intersecting h interval would be the value of h is taken in the solution of homotopy method. Based on Fig.8, the fifth curve is tangent to h interval $-1.8 \leq h \leq 0.3$. Based on this interval, a value of h can be chosen in order to obtain a solution with the absolute error is small when compared with a numerical solution. In this case, is chosen $h = -1$. With the selection of $h = -1$, then the homotopy solution will be obtained as a t function. Fig.9 shows that the solution of homotopy analysis method (HAM) and numerical solution (NUM) Runge-Kutta up to 10-th order which has a small absolute error. Seen at a distance of two curves are quite close to solution. This means that the homotopy method can be used to solve SIRS-SI model of malaria disease.

V. Figures and Tables

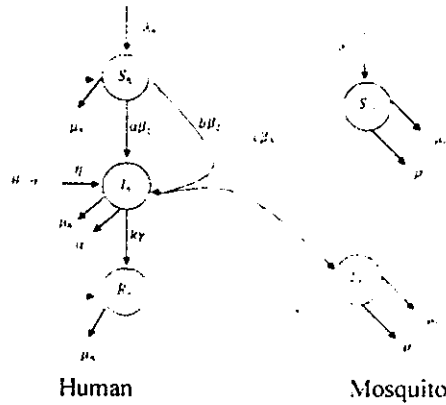


Fig. 1: Compartmental diagram of malaria disease

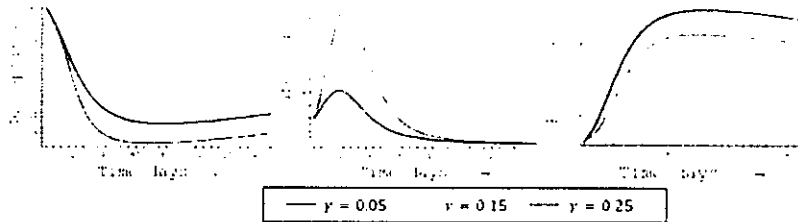


Fig. 2: Dynamics of human population under the treatment of anti-malarial drugs

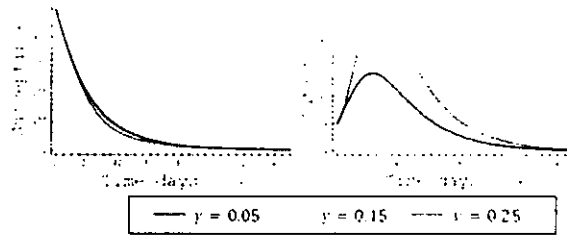


Fig. 3: Dynamics of mosquito population under the treatment of anti-malarial drugs

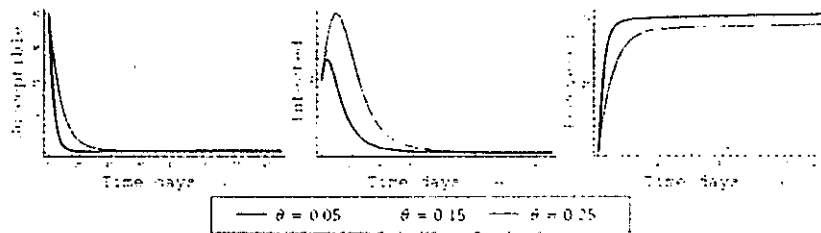


Fig. 4: Dynamics of human population under the treatment of vaccines

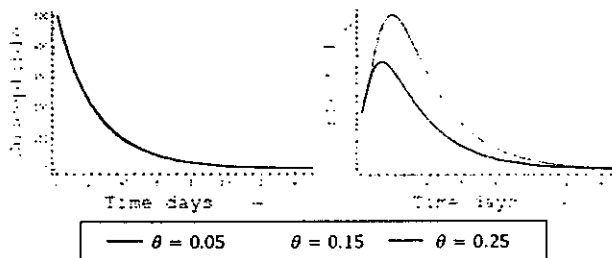


Fig. 5: Dynamics of mosquito population under the treatment of vaccines

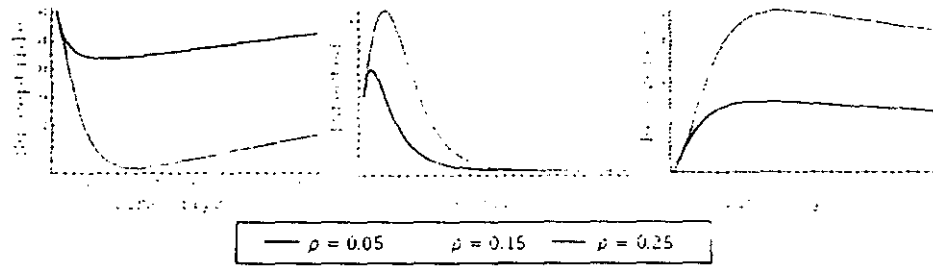


Fig.6: Dynamics human population under the treatment of spraying

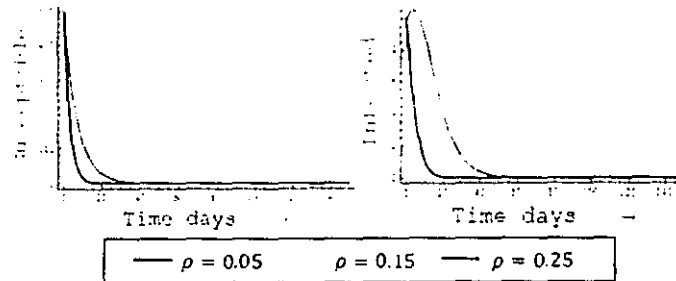


Fig.7: Dynamics of mosquito population under the treatment of spraying

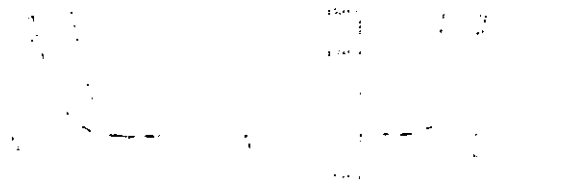


Fig.8: The h -curve up to 10-th order

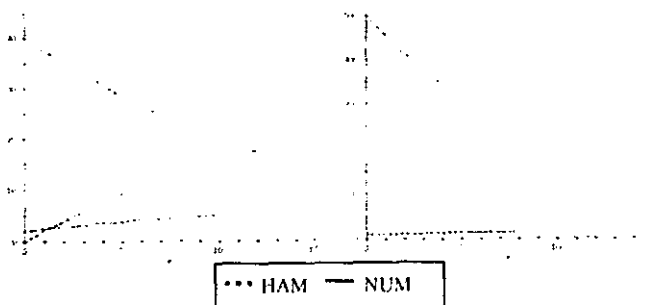


Fig.9: The solution of homotopy analysis method up to 10-th order

Table 1: Parameter values used for simulation of the effectiveness of anti-malarial drugs

Parameter γ	Basic reproduction number
$\gamma = 0.10$	$R_2 = 0.646$
$\gamma = 0.20$	$R_2 = 0.454$
$\gamma = 0.30$	$R_2 = 0.361$

Table 2: Parameter values used for simulation of the effectiveness of vaccines

Parameter θ	Basic reproduction number
$\theta = 0.10$	$R_3 = 0.047$
$\theta = 0.20$	$R_3 = 0.039$
$\theta = 0.30$	$R_3 = 0.027$

Table 3: Parameter values used for simulation of the effectiveness of spraying

Parameter ρ	Basic reproduction number
$\rho = 0.10$	$R_0 = 0.499$
$\rho = 0.20$	$R_0 = 0.488$
$\rho = 0.30$	$R_0 = 0.485$

VI. Conclusion

We have presented an SIRS-SI model of malaria transmission equipped with a series of treatments namely the use of vaccines, anti-malarial drugs and spraying. Toward disease-free and endemic equilibrium points, we perform a stability analysis characterized by a basic reproduction number. Through a series of simulations we have shown the effects of treatments with different levels of effectiveness to human and mosquito populations. We have also proposed the use of so-called homotopy analysis method as an alternate technique in deriving an approximate solution of the model. It has been shown that such method can approximate the numerical solution quite well.

References

- [1] Laarabi H, Labriji EH, Rachik M, Kaddar A. 2012 Optimal control of an epidemic model with a saturated incidence rate. *Modelling and Control*. Vol.17, No.4, pp. 448-459.
- [2] Augusto FB, Marcus N, Okosun KO. 2012. Application of optimal control to the epidemiology of malaria. *Electronic Journal of Differential Equation*. Vol. 2012, No.81, pp. 1-22
- [3] Abdullahi MB, Hasan YA, Abdullah FA. 2013. A mathematical model of malaria and the effectiveness of drugs. *Applied Mathematical Sciences* Vol. 7, 2013, No. 62, pp. 3079-3095
- [4] Mandal S, Sarkar RR, Sinha S. 2011. Mathematical models of malaria - a review. *Malaria Journal* Vol. 10, pp. 1-19
- [5] Schwartz L, Brown GV, Genton B, Moothy VS. 2012. A review malaria vaccine clinical projects based on the rainbow table. *Malaria Journal* 11:11
- [6] Ratovonjato et al. 2014. Entomological and parasitological impacts of indoor residual spraying with DDT, alphacypermethrin and deltamethrin in the western foothill area of Madagascar. *Malaria Journal* 13:21
- [7] Van Den Driessche P, Watmough J. 2008. Chapter 6. Further Notes on the Basic Reproduction Number. In: Brauer F, Van Den Driessche P, Wu, J. *Mathematical Epidemiology*. 1945. Lecture Notes in Mathematics, Springer, pp. 159-178
- [8] Chitnis NR. 2005. Using mathematical models in controlling the spread of malaria [dissertation]. Arizona (US). The University of Arizona.
- [9] Liao. 2004. *Beyond Perturbation: Introduction to the homotopy analysis method*. New York (US): Boca Raton

IOSR Journal of Mathematics

Volume 10, Issue 5, Version 2

September-October 2014

ISSN: 2319-765X

Contents

- 1 The Degree of an Edge in Alpha Product, Beta Product and Gamma Product of Two Fuzzy Graphs, **K. Radha, N. Kumaravel** 1 – 19
DOI: 10.9790/5728-10520119
- 2 Oscillation Theorems for Second Order Neutral Difference Equations. **P. Sundar, B. Kishokkumar** 20 – 30
DOI: 10.9790/5728-10522030
- 3 Counting Subgroups of Finite Nonmetacyclic 2-groups Having No Elementary Abelian Subgroup of Order 8, **M. Enioluwafe** 31 – 32
DOI: 10.9790/5728-10523132
- 4 Stochastic Analysis of Manpower System with Production and Sales, **K.H. Kumar, P. Sekar** 33 – 37
DOI: 10.9790/5728-10523337
- 5 Two-Phase Multivariate Stratified Sampling with Travel Cost: A Fuzzy Programming Approach, **S. Iftekhar, M.J. Ahsan, Q.M. Ali** 38 – 49
DOI: 10.9790/5728-10523849
- 6 Mathematical Model on Power Needed to Sustain Flight, **T.E. Efor, D.I. Ajibo** 50 – 55
DOI: 10.9790/5728-10525055
- 7 A SIR Mathematical Model of Dengue Transmission and Its Simulation, **Asmaidi, P. Sianturi, E.H. Nugrahani** 56 – 65
DOI: 10.9790/5728-10525665
- 8 SIRS-SI Model of Malaria Disease with Application of Vaccines, Anti-Malarial Drugs, and Spraying, **R.G. Putri, Jaharuddin, T. Bakhtiar** 66 – 72
DOI: 10.9790/5728-10526672
- 9 Theoretical Mathematical Model on Temperature Regulation during Wound Healing after Plastic Surgery of Two Dimensional Human Peripheral Regions, **M. Jain** 73 – 82
DOI: 10.9790/5728-10527382
- 10 On Fractional Differential Operators Involving Multivariable Generalized Hypergeometric Function, **R.M. Meghwal** 83 – 89
DOI: 10.9790/5728-10528389