

Birth Type and Ewe Age on Milk Yield of Local sheep at Jonggol Animal Science Teaching and Research Unit

Prima Puji Raharjo
Cece Sumantri
Maman Duldjaman

Local sheep → Jonggol.



Local sheep have many desirable characters adapted to low quality vegetation and to withstand seasonal shortages of food and water during dry season

Introduction

- ✿ Many Researches → dairy sheep → milk yield.
- ✿ Sheep used → local sheep (Jonggol).
- ✿ Local sheep → milk yield → mortality → meat production
- ✿ LEISA model → extensive management → was not very hard to raise in practices.

The Objective

- ✿ The objective of the research is to study the effect of age and birth type on milk yield.
- ✿ Purpose → data base and increase sheep production → meat production also.

Jonggol Animal Science Teaching and Research Unit / JASTRU (UP3J)



🌸 Jonggol area → 169 ha → dry condition, low quality vegetation

Material

- ✿ The Local Sheep (Jonggol) → Thin Tail Javanese Sheep X Garut Sheep (natural).
- ✿ The total number ewe = 92 head
- ✿ 78 single births ($l_1 = 9$ heads, $l_2 = 18$ heads, $l_3 = 16$ heads, $l_4 = 35$ heads).
- ✿ 14 twins ($l_1 = 3$ heads, $l_2 = 3$ heads, $l_3 = 1$ head, $l_4 = 7$ heads).

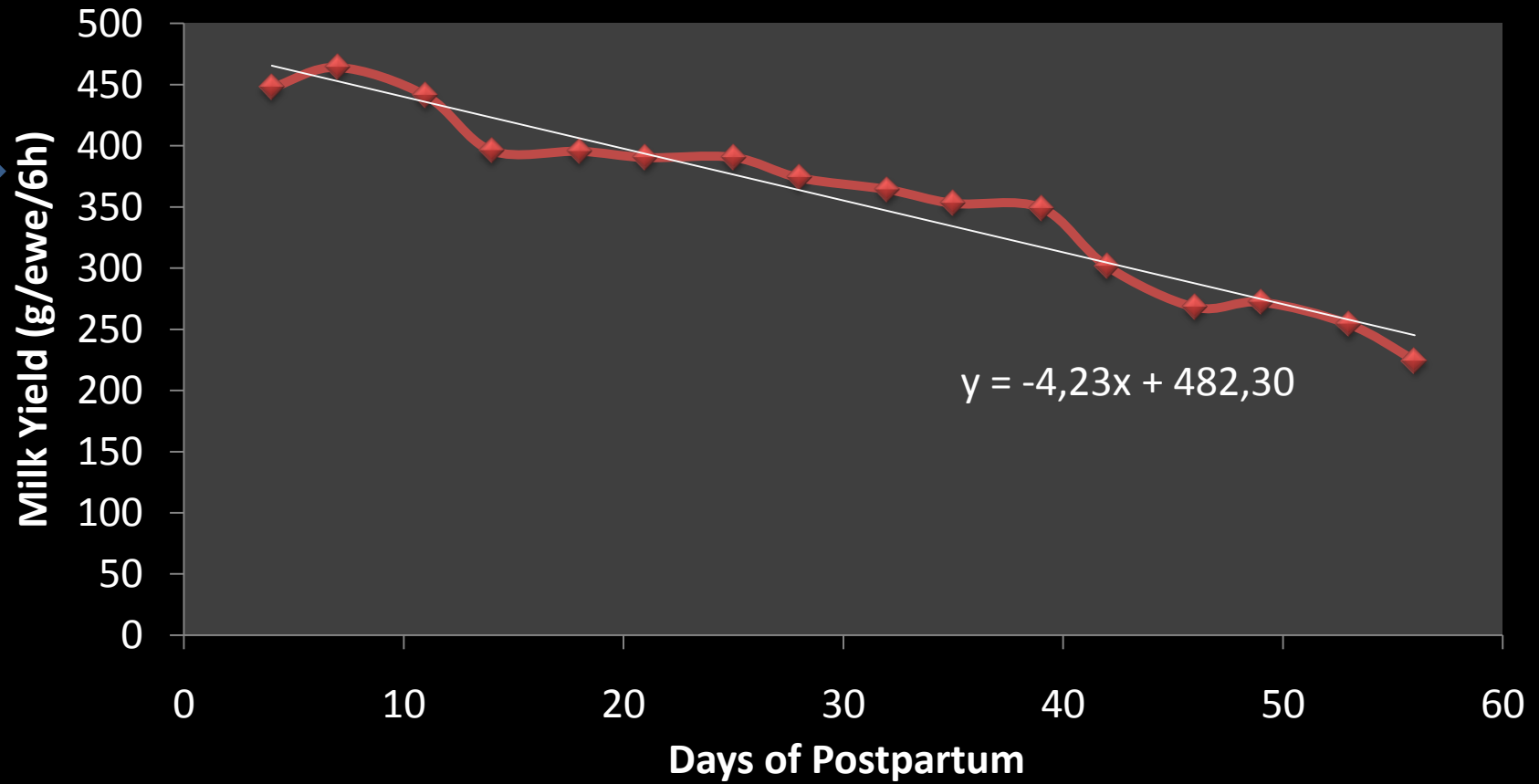
Method

- ❁ Lamb suckling weight differences → calculate milk yield.
- ❁ Lamb → fasting treatment → 6 hours
- ❁ Time Schedule → 05.00 am , 11.00 am, 05.00 pm and at 11.00 pm
- ❁ Data analysis → Factorial design 2 x 2 → t-student

Results & Discussion

Matter	Local Sheep (n = 92 ewes)	Priangan	
		Sumaryadi (1997)	Adriani (1998)
Litter Size	1.15	1.28	1.40
Average Milk Yield (kg/ewe/day)	1.42 ± 0.29	0.65 ± 0.03	1.42 ± 0.53
Declining Rate (%)	4.89	-	-

Results & Discussion



Results & Discussion

Birth Type

**Average of Milk Yield
(kg/ewe/day)**

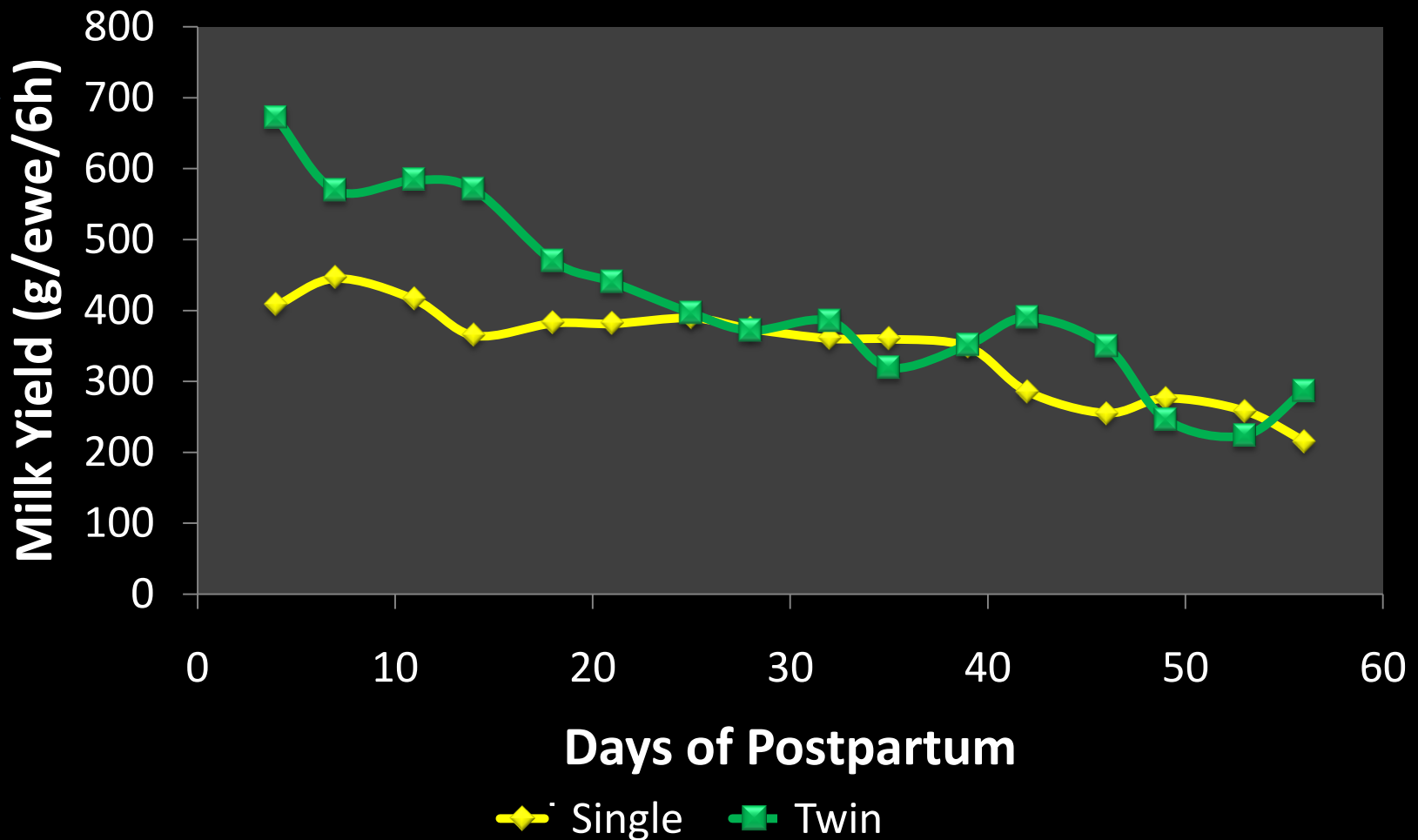
Single

1.38 ± 0.26^a

Twin

1.66 ± 0.51^b

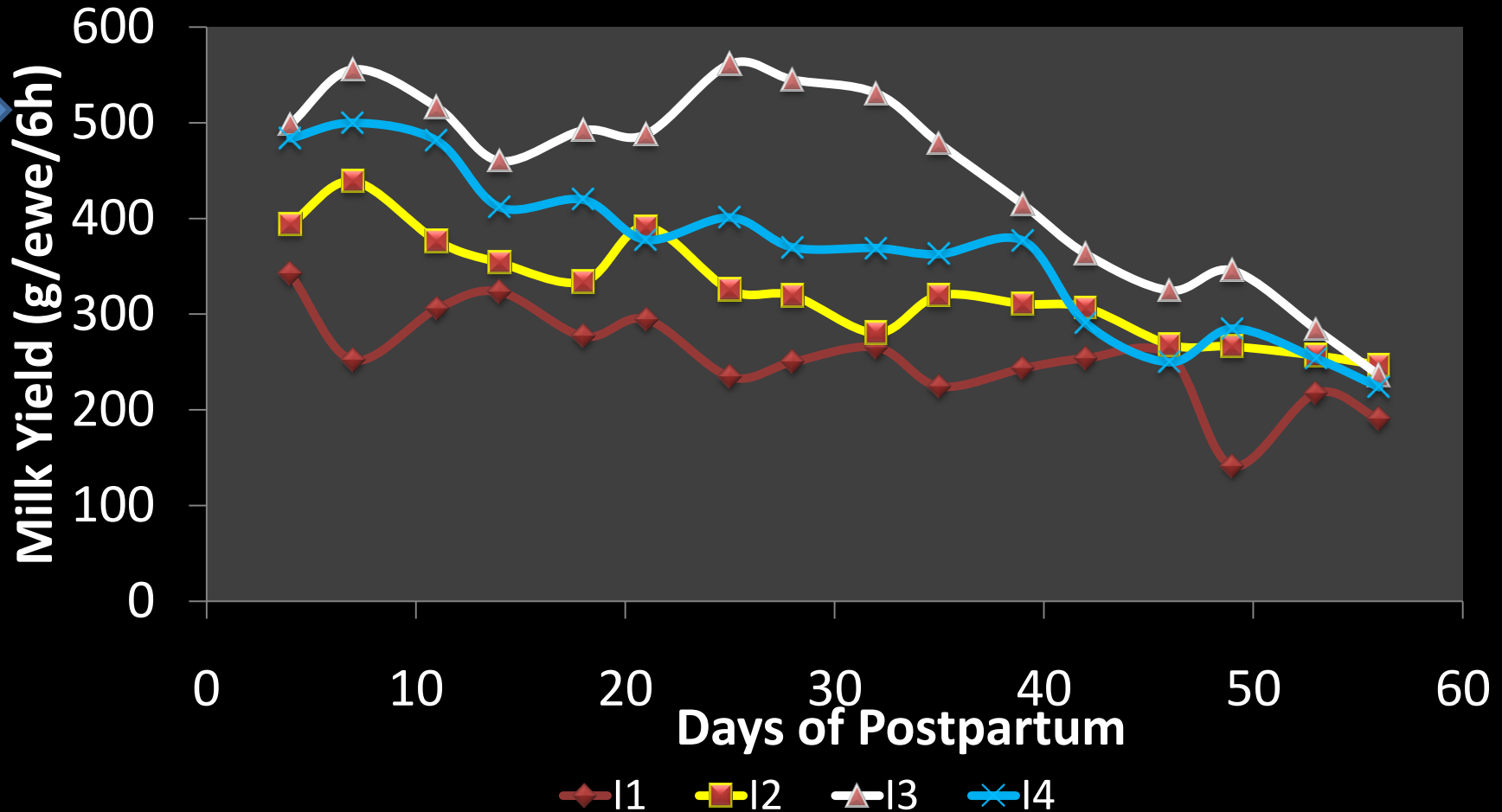
Results & Discussion



Results & Discussion

Age	Average of Milk Yield (kg/ewe/day)
I_1	1.02 ± 0.19^a
I_2	1.29 ± 0.22^{ab}
I_3	1.77 ± 0.41^c
I_4	1.45 ± 0.34^b

Results & Discussion



Conclusion

- ✿ Age of ewe and birth type have a real effect on milk yield.
- ✿ Raising under extensive management → model LEISA → not sufficient feed but quiet high on milk yield.

**Thanks For Your
Attention**