

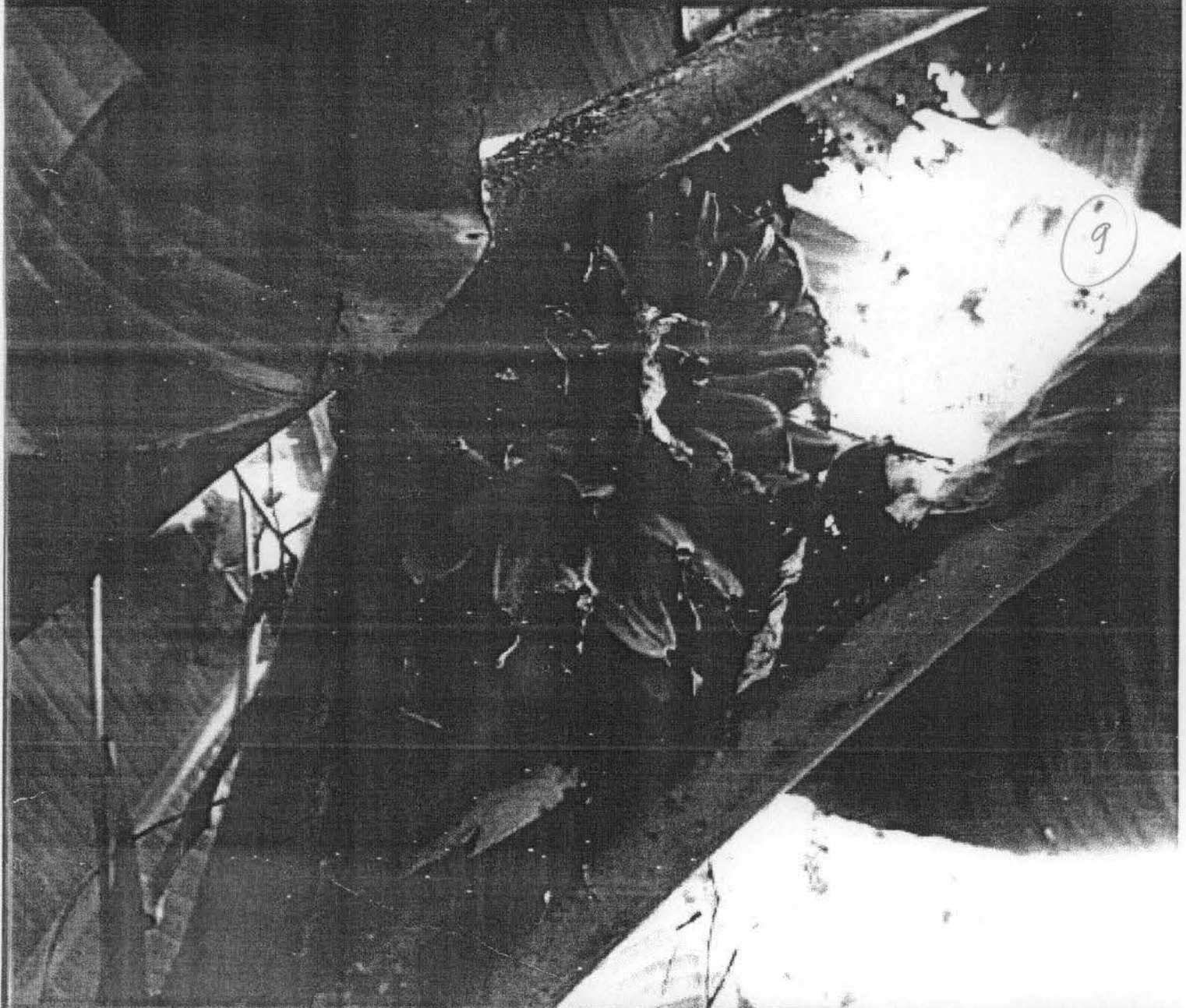
# The Gardens' Bulletin

## Singapore

VOL. 61 (2) 2010

ISSN 0374-7859

A Commemorative Volume of the  
150th Anniversary of the Singapore Botanic Gardens



150



## Research

Gardens' Bulletin

Herbarium

### Gardens' Bulletin

Orchid Breeding and  
Conservation Biotechnology  
Laboratory

Library of Botany and  
Horticulture  
Publications

Gardens' Bulletin

### The Gardens' Bulletin Singapore



The Gardens' Bulletin Singapore is a peer-reviewed journal publishing original papers and reviews on plant structure and taxonomy (including revisions), evolution and biogeography, floristics, ecology and conservation, as well as related fields such as horticulture and ethnobotany, with emphasis on the plant life of the Southeast Asian-Pacific region.

Dr K.M Wong  
(Editor-in-Chief)

Dr Jana Leong-Škomičková  
(Managing Editor)

Serena Lee  
(Graphics Editor)

Y.W. Low  
(Copy Editor)

Christina Soh  
(Business Manager)

#### Gardens' Bulletin Online

#### Editorial Advisory Board

Professor Sir Peter Crane  
Yale University  
U.S.A.

Dr Nigel Taylor  
Singapore Botanic Gardens  
National Parks Board, Singapore

Dr Rogier P.J. de Kok  
Royal Botanic Gardens, Kew  
U.K.

Dr I.M. Turner  
Singapore Botanic Gardens  
National Parks Board, Singapore

Dr W.J. Kress  
National Museum of Natural History  
Smithsonian Institution, U.S.A.

Dr J.F. Veldkamp  
National Herbarium Nederland  
The Netherlands

Dr David J. Middleton  
Royal Botanic Garden Edinburgh  
U.K.

Dr Jun Wen  
National Museum of Natural History  
Smithsonian Institution, U.S.A.

Dr Kiat W. Tan  
Gardens by the Bay  
Singapore

Professor Nianhe Xia  
South China Institute of Botany  
P.R. China

The Gardens' Bulletin Singapore is an open-access journal published twice yearly by the National Parks Board, Singapore. Authors currently opt for 50 paper offprints and/or a pdf reproduction of their contribution (gratis).

Annual subscription for the Gardens' Bulletin is Singapore \$100.00 including postage. Overseas subscribers should make payment in the form of bank draft or international money order in Singapore currency, payable to National Parks Board. Please forward payment to:

Accounts Receivable Section,  
National Parks Board, Headquarters,  
Singapore Botanic Gardens,  
1 Cluny Road,  
Singapore 259569

#### Instructions for Contributing Authors

The Gardens' Bulletin, Singapore:  
Publication Ethics and Publication Malpractice Statement; Open Access Policy

# Gardens' Bulletin Singapore

## Year of Publication: 2010, Vol. 61 (2)

- Dr. C. Samper, Prof. P.H. Raven, Prof. S. Hopper and Prof. Sir P. Crane  
Congratulations to the Singapore Botanic Garden Sesquicentennial 2009 [Page 241- 242]
- Argent, G.  
A New Species of Wild Banana *Musa arfakiana* (Musaceae) from Papua (Formerly Irian Jaya) of Indonesia [Page 243- 248]
- Boyce, P.C., I.B. Ipor and W.L.A. Hettterscheid  
A Review of the White-flowered *Amorphophallus* (Araceae: Thomsonieae) Species in Sarawak [Page 249 - 268]
- Boyce, P.C., S.Y. Wong and Fasihuddin B.A.  
Studies on Homalomeneae (Araceae) of Borneo II: The *Homalomena* of Nanga Sumpa (Batang Ai) - Novel and Pre-existing Taxa, and Notes on Iban Usages [Page 269 - 318]
- Green, P.T., J. Claussen and D. J. O' Dowd  
Lost for a Century: Rediscovery of the Endemic Ridley' s Jewel Orchid, *Zeuxine exilis* Ridl., on Christmas Island, Indian Ocean [Page 319- 326]
- Kloppenburg, R. and S.V. Siar  
New Species of *Hoya* (Apocynaceae) from Brunei and the Philippines [Page 327 - 334]
- Kumar, P. and J.F. Veldkamp  
*Pecteilis rawatii* (Orchidaceae), a New Species from India [Page 335 - 342]
- Liang, J., H. Zhu and Y.-X. Ma  
Land Use, Land Cover Change and Conservation in the Dipterocarp Rain Forest Area of Southern Yunnan, China [Page 343 - 358]
- Ly, N.S., S. Hul and J. Leong-Škorničková  
*Siliquamomum oreodoxa* (Zingiberaceae): a New Species from Southern Vietnam [Page 359- 368]
- Middleton, D.J.  
Three New Species of *Wrightia* (Apocynaceae: Apocynoideae) from Thailand [Page 369 - 378]
- Miettinen, O. and N. Hernawati  
Two Basidiomycetes New to Indonesia, *Pterygellus armeniacus* and *Rimbachia Leucobryi* [Page 379 - 388]
- Nathi, Y., B.C. Tan and T. Seelanan  
Ten New Records of Mosses from Doi Inthanon National Park in Thailand [Page 389 - 400]
- Reynolds, D.R.  
Epifoliar Fungi of Singapore [Page 401 - 436]
- Sipman, H.J.M.  
A Conspectus of the Lichens (Lichenized Fungi) of Singapore [Page 437 - 482]
- Staples, G.W.  
A Checklist of *Merremia* (Convolvulaceae) in Australasia and the Pacific [Page 483 - 522]

- Widodo, P., A. Hartana and T. Chikmawati  
*Syzygium subscandens* (Myrtaceae), a New Species from Sumatra [Page 523- 526]
- Wong, S.Y.  
Studies on Schismatoglottideae (Araceae) of Borneo XII: Three New Species of *Schismatoglottis*  
in the Multiflora Group [Page 527- 540]
- Wong, S.Y. and P.C. Boyce  
Studies on Schismatoglottideae (Araceae) of Borneo X. *Pichinia*, a New Genus from Sarawak,  
Malaysian Borneo [Page 541 - 548]
- Mifsud, S.  
A Guide to the Mosses of Singapore by B.C. Tan and B.C. Ho [Page 549 - 550]
- Staples, G.  
Parasitic Flowering Plants by H.S. Heide-Jørgensen [Page 551 - 552]
- Tan, B.C.  
Forest Formations of the Philippines by E.S. Fernando, Min Hwan Suh, Jaeho Lee and Don Koo  
Lee [Page 553 - 554]

## *Syzygium subscandens* (Myrtaceae), a New Species from Sumatra

P. WIDODO<sup>1,2</sup>, T. CHIKMAWATI<sup>3</sup> AND A. HARTANA<sup>3</sup>

<sup>1</sup> Sekolah Pascasarjana Institut Pertanian Bogor, Kampus Dramaga Bogor 16680

<sup>2</sup> Fakultas Biologi Universitas Jenderal Soedirman,  
Jl Dr. Soeparno 63 Purwokerto, 53122 INDONESIA.

Email: pwidodo@unsoed.ac.id

<sup>3</sup> Departemen Biologi, Institut Pertanian Bogor, Kampus Dramaga Bogor 16680  
INDONESIA.

### Abstract

A new species of *Syzygium* Gaertn. from Sumatra is described and illustrated: *Syzygium subscandens* Widodo. Morphologically the new species is similar to *S. garciniifolium*, but differs in being a small tree and in having longer terminal and axillary panicles.

### Introduction

Sumatra is one of the largest islands in Indonesia and is one of the richest in biodiversity (Whitten, 1999), however, it is also one of the least known flora in the country. Land conversions, the development of industry, illegal logging, and forest fires have created severe pressure on the biodiversity of Sumatra.

Species of *Syzygium* are key components of Southeast Asian and Sumatran lowland forests. They provide nectar, pollen, and fruits as food for a wide range of insects, birds and mammals (Parnell *et al.*, 2007). They are also of economic importance to humans as sources of fruits, timber, tannin and medicine (Heywood *et al.*, 2007).

The genus *Syzygium* is largest in the family Myrtaceae, comprising *ca* 1200 species (Craven *et al.*, 2006), or approximately 1040 species (Govaerts *et al.*, 2008). The current concept of *Syzygium* includes species with and without an intercotyledonary inclusion; the inflorescences are either solitary or in clusters, either on old trunk, axillary, or terminal; and the calyx may be either calyptrate or free (Craven *et al.* 2006).

The new species was identified during preparation of a revision of *Syzygium* in Sumatra. To make sure that the new species has not been named and reported anywhere else outside of Sumatra, we compared it with specimens of morphologically similar species from the surrounding islands kept in BO, L and K.

The new species of *Syzygium* is an important discovery for Sumatra because it creates awareness and appreciation of the island's tree biodiversity. The new information can be used for the development of an effective conservation strategy.

***Syzygium subscandens*** Widodo, *sp. nov.*

*Frutices subscandentes. Ramuli teretes, luteo-brunnei pallidi. Folia coriacea, obovata, basi et apice obtusa. Inflorescentiae terminales et laterales, paniculatae; floribus cruciformibus stellatis, hypanthio obconico-urceolati; corollis alboroseis. –Typus:* Indonesia. Sumatra WC, west side of Mt. Merapi, 2,300 m alt., 22 Jun 1953, *JV Brossum W 2201* (holotype, BO!; iso, L.). **Fig. 1.**

**Treelets**, climbing on tree. Twigs terete, smooth, yellowish. **Leaves** obovate, 14-18 x 7.5-10.6 cm, drying yellowish brown, lower surface paler; base obtuse, apex obtuse; petiole thick, not swollen, 1-1.2 cm long; midrib narrowly furrowed on the upper surface, rounded, raised below; lateral veins 5-8 pairs, straight or curved, 2-2.8 cm apart, at an angle of 45°-70°; oil dots none or few; intramarginal vein looped, faint, 5-10 mm from margin. **Inflorescence** a panicle, up to 9 cm long, to 9 cm wide, terminal and axillary; peduncle 2-9 mm; ultimate inflorescence axis ca 5 mm long. **Flower** buds turbinate, white; pseudostipe sometimes none, hypanthium smooth, obconic to urceolate. Sepals 4, free, triangular, margin hyaline, 5-8 mm long and wide, pink. Petals 4, free, whitish pink, 4-8 mm long and wide, orbicular or slightly triangular, a few gland dots per petal. Stamens deciduous, not seen. Style not seen. **Fruits** globose ca 5 mm (immature). **Seeds** solitary, globose, ca 3 mm diameter.

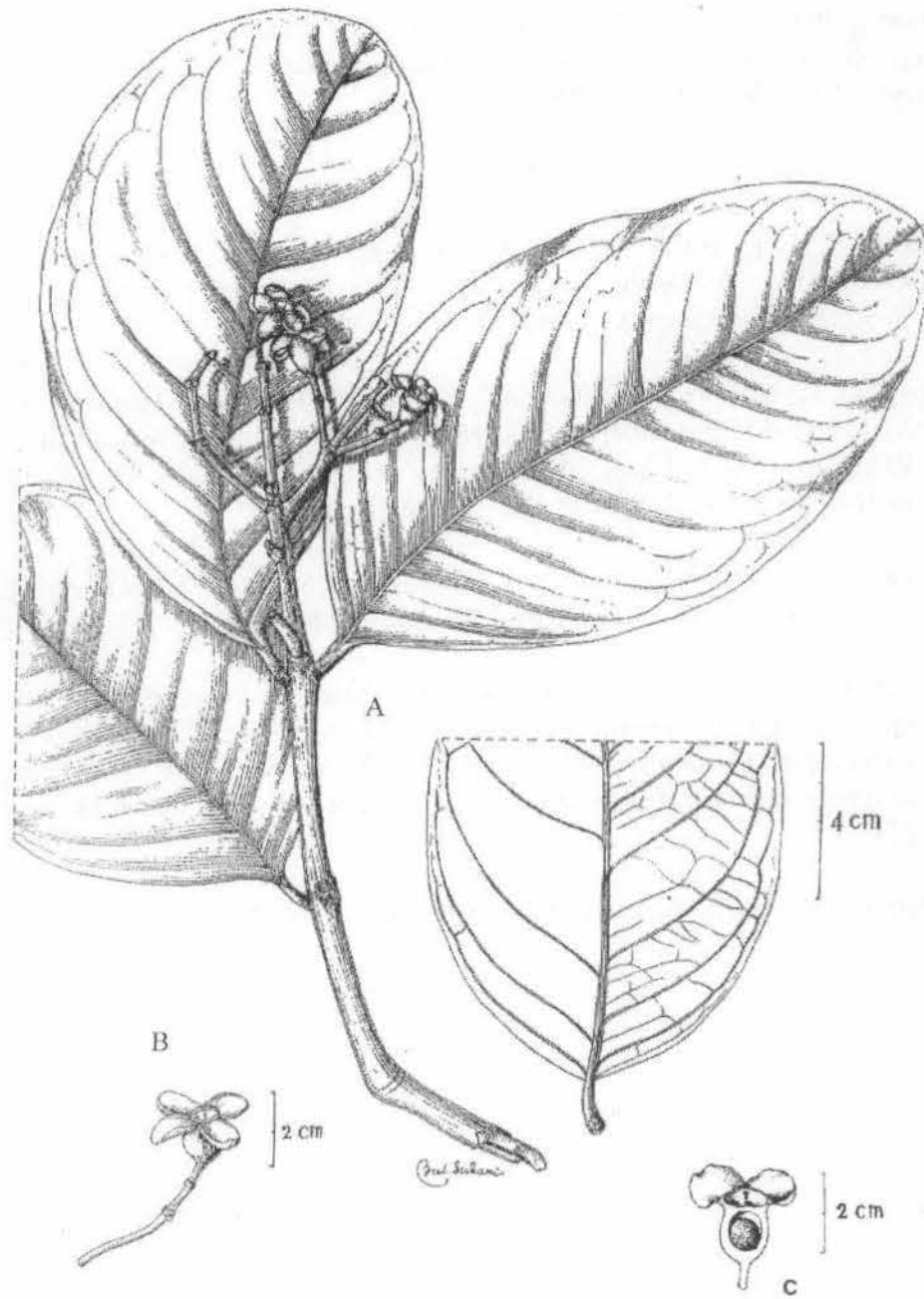
*Habitat:* Primary forest, climbing on trees.

*Distribution:* Known only from Mt. Merapi in Sumatra.

*Notes:* *S. subscandens* looks like *S. garciniifolium*. It differs in its habit, being a small tree or shrub climbing on trees, and in its longer terminal and axillary panicles. It is characterised also by the thick leathery leaves with very faint looped intramarginal veins.

### Acknowledgements

We would like to thank Dr. Eko B. Walujo (BO), Prof. E. F. Simets (L) and Dr. D. Mabberley (K), Herbarium Bogoriense for the permission to examine the collections and for the use of facilities. Prof. Dr. Mien A. Rifai, Herbarium Bogoriense, and Mr. Lyn Craven, CSIRO, Canberra, Australia are thanked for advice, references, and discussion. Prof. Dr. John Parnell, Trinity College,



**Figure 1.** *Syzygium subscandens*. A. Leafy twig with inflorescence; B. Flower; C. Young Fruit. A, B and C from *JV Brossum* W No. 2201 (BO). Drawn by Subari.

Dublin, Ireland, is appreciated for references. Subari is also thanked for drawing the figures. The Directorate General of Higher Education of the Republic of Indonesia is acknowledged for providing scholarships via IPB (Bogor Agricultural University).

### References

- Craven, L.A., E. Biffin and P.S. Ashton. 2006. *Acmena*, *Acmenosperma*, *Cleistocalyx*, *Piliocalyx* and *Waterhousea* formally transferred to *Syzygium* (Myrtaceae). *Blumea* **51**: 131.
- Govaerts, R., M. Sobral, P.S. Ashton, F. Barrie, B.K. Holst, L.L. Landrum, K. Matsumoto, F.F. Mazine, E. Nic Lughadha, C. Proença, L.H. Soares-Silva, P.G. Wilson and E. Lucas. 2008. *World Checklist of Myrtaceae*. The Board of Trustees of the Royal Botanic Gardens, Kew.
- Heywood V.H., R.K. Brummitt, A. Culham and O. Seberg. 2007. *Flowering plant families of the world*. Royal Botanic Gardens, Kew.
- Parnell, J.A.N., L.A. Craven and E. Biffin. 2007. Matters of scale: dealing with one of the largest genera of angiosperms. In: Hodkinson, T.R. and J.A.N. Parnell (eds.). *Reconstructing the tree of life: taxonomy and systematics of species rich taxa. Systematic Association Special Volume Series 72*: 251-273.
- Whitten, T. 1999. *The Ecology of Sumatra*. Tuttle Publishing.