

Business and Entrepreneurial Review

Articles

- Path Analysis Communication Model of Cooperation Organization in the Development Agricultural Mechanization (Village Unit Cooperative/VUC Rice Milling Utilization Case in Karawang and Cianjur District West Java Province) **97**
Parlaungan Adil Rangkuti & Amiruddin Saleh
- Customer Retention Strategies at Hypermarkets in Jakarta **121**
Willy Arafah
- "Green" HRM: An Evaluation and the Future Agenda **131**
Andreas W. Gunawan Putra
- Toward Rural Sustainable Photovoltaics Development in Indonesia the Effects of Socio-Economic Benefit, Information Access, and Financing Facilities to the Sustainability of Photovoltaics Technology Applications, **139**
I Wayan Sujana
- Road Transport of Goods in Indonesia: Infrastructure, Regulatory and Bribery Costs **163**
Brasukra G. Sudjana
- Antecedents and Consequences of Entrepreneurial Leadership in a Service Industry Setting **185**
Rowlan Takaya & Nico Lukito

Business and Entrepreneurial Review

EDITORS IN CHIEF

Prof. Dr. Thoby Mutis (Trisakti University)
Prof. Dr. Victor Siagian (Trisakti University)
Dr. Willy Arafah, MM (Trisakti University)

EDITORS

Maria R. Nindita Radyati, Ph.D (Trisakti University)
Dr. D.S. Priyarsono (Trisakti University)
Dr. Surya Dharma (Trisakti University)
Dr. Ina Primiana (Padjadjaran University)
Dr. Ine S. Ruky, MA (University of Indonesia)
Brian Downey, MA (Hogeschool INHOLLAND, Diemen, Netherlands)
Prof. Dr. Zulkifli Husin (Syahkuala University)
Benjamin C. Bagadion Jr., Ph.D. (Asian Institute of Management, Makati City, Philippines)
Dr. James Simanjuntak (Jakarta Atma Jaya Catholic University)
Prof. Dr. Musa Hubeis (Bogor Agricultural University)
Dr. M. Syamsuddin (Bandung Institute of Technology)
Dra. Ninawati, MM (Tarumanagara University)
Drs. Wakhid Slamet Ciptono, MBA (Gadjahmada University)
Drs. Edy Sukarno, Ak, MM (Pancasila University)

SENIOR EDITORS

Samiul Hasan, Ph.D. (University of Technology, Sydney)
Prof. Edwin Shinn, Ph.D. (Colorado State University)
Wilson David Ivan, MSc (Hogeschool, Diemen, Netherlands)
Associate Prof. Stephen T.T. Teo, Ph.D. (School of Management, University of Technology, Sydney)
Dr. John Hutagaol (University of Indonesia)
Prof. Hendrawan Supratikno, Ph.D. (Business Institute & Informatic Indonesian)
Bramantyo Johan Putra, Ph.D. (PPM Business School)
Associate Prof. Alan R. Nankervis (School of Management, RMIT University, Australia)

PRODUCTION TEAM

Dra. Sharon Tania Widjaja, SE, Cecep Munir, Ir. Yanuar Latief, MM,
Enny Sulistyowati, SH, Renny Risqiani, SE, MM

PUBLISHER

University of Trisakti

Business and Entrepreneurial Review, is an International Journal published by Graduate Program of Trisakti University in October 2001. Its articles' topics are in the scope of management studies (private and public sectors) and entrepreneurship in a wide-rangé understanding. The articles presented must be results of a comprehensive research that includes empirical/experimental and policy analysis as well as results of idealistic breakthrough and in-depth contemplation of applied practices of the said field of knowledge.

Editor and Publisher of Business and Entrepreneurial Review

Graduate Program, 7th Floor Trisakti University, Building D
Jl. Kyai Tapa Grogol - Jakarta 11440 - Indonesia
Phones: 62 21 5663232 ext. 8327 & 8332; Fax: 62 21 5668640

Printed by: Trisakti Press

Yearly Subscription (published in April and October)

Subscriber: Rp 50.000.- (1 year); Institution / library): Rp 60.000.- (1 year)

ACKNOWLEDGMENT

Samiul Hasan, Ph.D. (University of Technology, Sydney)

Prof. Edwin Shinn, Ph.D. (Colorado State University)

Wilson David Ivan, MSc (Hogeschool INHOLLAND, Diemen, Netherlands)

**Associate Prof. Stephen T.T. Teo, Ph.D. (School of Management,
University of Technology, Sydney)**

Dr. John Hutagaol (University of Indonesia)

Prof. Hendrawan Supratikno, Ph.D. (Business Institute & Informatic Indonesian)

Dr. Bramantyo (PPM Business School)

Prof. Dr. Jhon Ihalaaw (UPH Business School)

TABLE OF CONTENT

Volume 10, Number 2, April 2011

1. Path Analysis Communication Model of Cooperation Organization in the Development Agricultural Mechanization (Village Unit Cooperative/VUC Rice Milling Utilization Case in Karawang and Cianjur District West Java Province), <i>Parlaungan Adil Rangkuti & Amiruddin Saleh</i>	97
2. Customer Retention Strategies at Hypermarkets in Jakarta, <i>Willy Arafah</i>	121
3. "Green" HRM: An Evaluation and the Future Agenda, <i>Andreas W. Gunawan Putra</i> ...	131
4. Toward Rural Sustainable Photovoltaics Development in Indonesia the Effects of Socio-Economic Benefit, Information Access, and Financing Facilities to the Sustainability of Photovoltaics Technology Applications, <i>I Wayan Sujana</i>	139
5. Road Transport of Goods in Indonesia: Infrastructure, Regulatory and Bribery Costs, <i>Brasukra G. Sudjana</i>	163
6. Antecedents and Consequences of Entrepreneurial Leadership in a Service Industry Setting, <i>Rowlan Takaya & Nico Lukito</i>	185

**PATH ANALYSIS COMMUNICATION MODEL OF
COOPERATION ORGANIZATION IN THE DEVELOPMENT
AGRICULTURAL MECHANIZATION
(VILLAGE UNIT COOPERATIVE/VUC RICE MILLING
UTILIZATION CASE IN
KARAWANG AND CIANJUR DISTRICT
WEST JAVA PROVINCE)**

Parlaungan Adil Rangkuti

Lecturer of Agricultural Technology Faculty, Bogor Agricultural University

Amiruddin Saleh

Lecturer of Human Ecology Faculty, Bogor Agricultural University

Jl. Dermaga, Bogor, Indonesia

email: rangkuti_pa@yahoo.com, Mobile: 085880535240

ABSTRACT

The objectives of this research were (1) to explain VUC organization communication factors which are the key in improving the VUC performance, (2) to explain VUC organization communication factors that become the key in developing the VUC capacity, and (3) to formulate defined strategy in improving the VUC quality service as the agricultural economic organization for agricultural mechanization development. Active category of VUC sample as analysis unit was determined by each of five VUC samples at Karawang and Cianjur District. From each VUC sample, thirty respondents that use rice milling of VUC, were taken. This research was designed using survey method with multi analysis approaches, they were: descriptive analysis and path analysis using SEM (Structural Equation Model) analysis with LISREL analysis support. The primer and secondary data were collected from December 2009 to March 2010. The result of this research showed that (1) according to the similarity test model referring to the goodness of fit criteria from SEM analysis showed that VUC organization communication model is good, (2) level of performance, capacity, and quality of VUC service at Karawang and Cianjur District classified as low, (3) determinant factors which have real influence on the low performance and capacity of VUC are low quality of information, inconvenient organization communication environment, and low intensity of public organization communication, (4) determinant factors which have real influence on the low quality of VUC service are low quality of VUC personnel characteristic and weak VUC organization communication process, and (5) improvement strategy of VUC quality service should be done by developing VUC organization communication model through agricultural information system development in the centers of agriculture production in each rural area towards modern agriculture.

Keywords: *Organization communication, rice milling unit, village unit cooperatives*

INTRODUCTION

One of barriers to national development is low participation of farmer as a result hasn't been effective communication between farm's actors with information resources, either to government or other information resources. Towards optimizing the utilization of natural resources and potential empowerment of human resource in the agricultural development necessary new paradigm of agricultural development communication for increasing the efficiency and affectivity of communication along with agricultural science and technology progress also technology of communication and global trade competition.

Mosher (1970) formularizes the modern agriculture development paradigm that refers to rational attitude, market orientation, impersonal institutional net, future orientation and application of science and technology to do activities of an increasingly modern farming. For developing modern agriculture need pay attention to environments sustainable by applying sustainable development with adjust an appropriate technology including applying an appliance technology and agriculture machine (alsintan) for agricultural mechanization development (*agricultural mechanization*). Agricultural mechanization development already need for farmers to increase their quality and quantity of production from pre harvest to post harvest activities.

Selective application of alsintan has had a role in improving efficiency and quality of production with appropriate technology and more cost competitive. Adoption of technological innovations for the development of agricultural mechanization had evolved as a process of transformation of science and technology through agricultural extension programs conducted by the government (Handaka, 1996). Application of alsintan by farmers was developing as adoption of technology innovation through process of communication with extension system and using Cooperation organization (VUC) as the container development toward a modern farming. Nevertheless in the Globalization era, adoption process of agriculture technology innovation has decreased as result of information systems that were not able to follow the speed of changes that occur in the progress of communication technology and agricultural technology associated with management of agriculture resources and global environment.

Given the principles of cooperation associated with Act. 25 year 1992 concerning Cooperation showed that the success of a cooperation was largely determined by the performance, capacity and service quality of farm cooperation to meet the interests of members. With the growing development of communication technology and agriculture technology, transformation and adoption of information technology innovation were key to improving performance, capacity and service quality of VUC. Along with the development of communication sciences development, the role of organizational communication of VUC increasingly important in building a more modern farming. Organizational communication of VUC regarding the structure of human relationships and the various elements of VUC organization where all the elements contained therein were interrelated such as: the quality of information, communication climate of VUC organization, the intensity of public communication of VUC organization, personnel characteristics of VUC and communication processes of VUC organization.

Generally, the purpose of this study is to analyze the relationship between variables or path communication model cooperation organizations to improve performance, capacity and service quality in the utilization of rice milling cooperation to members within the framework of the development of farmer cooperation and agricultural mechanization. On the basis of the thinking that has broken down and the problem as already stated above, this research specifically aims to: (1) Explaining organizational communication factors of VUC which are become decisive in VUC performance improvement, (2) Describe the communication organization factors of VUC which became decisive in increasing the capacity of VUC and (3) To formulate appropriate strategies to improve the quality of service cooperation as an economic organization of farmers in the development of agricultural mechanization.

THEORETICAL FRAMEWORK AND HYPOTHESIS DEVELOPMENT

SEM Application Procedure

According to Kusnendi (2008), model was the construction of theoretical framework or research that was formulated in the form of diagrams and / or certain mathematical equations, and essentially states the research hypotheses. To check compatibility or suitability of organizational communication models that had been designed to test compatibility with path analysis model diagram or path analysis. VUC organizational communication model in Karawang and Cianjur Districts in this study were analyzed using structural equation models or SEM. In the analysis of SEM measurement models and structural models were integrated to form a basic model or a hybrid model that uses indicator covariance matrix between variables.

SEM procedure generally contain several phases of activities namely: (1) Model specification, (2) Identification, (3) Estimates, (4) Test the model fit and (5) Respecification. Model specification was done by specifying the model of research that was rooted in the theory and results relevant to research formulated a framework of thought and then submitted the structural model that can be identified variables and indicators for each variable. The next step is to translate the model into the path diagram and convert into the measurement equation and structural variables. In LISREL format, which analyzed the data input was intended to obtain statistical data in the form of covariance matrix or correlation matrix that was used to analyze the pattern of causal relationships between variable. The device provides a program LISREL SIMPLIS (Simple LISREL) to analyze each stage of SEM procedures (Kusnendi, 2008).

Path analysis conducted to determine the direct and indirect influence of a number of variables bound to free variables that had been directly observed each of the indicators that had been formulated in a model of organizational communication of VUC in the Karawang District and Cianjur District. Data analysis performed with SIMPLIS application (Simple-lisrel) to make meaning of SEM path diagram with the help of the program LISREL 8.30. Results of analysis with SIMPLIS application displays a simple diagram with the parameter estimation data from organizational communication model of VUC in Karawang and Cianjur District with the analysis of each variable as the following discussion.

Based on the research problem formulation, research objectives, literature review and framework of thought, where the main hypothetical or hypothesis tested in this research were as follows:

1. VUC performance improvement was influenced significantly by the organization's information of VUC, organizational climate and intensity of public communication of VUC?
2. VUC capacity development in improving the utilization services of VUC rice mill significantly influenced by the VUC performance, VUC personnel characteristics and organizational communication processes of VUC?

METHODS

This study design was a combination of explanatory research with descriptive research and testing of hypotheses, thus this research method using survey methods with multi-analysis approach include: descriptive analysis, correlation and path analysis (path analysis). In this research analysis of structural equation model used to explain the factors that allegedly relate to the performance of cooperation, capacity and service quality of VUC organizations in utilization of rice mills. Thus, this study design was descriptive correlation survey with multi-analysis approach using the SEM with help of statistical program LISREL (Linear Structural Relationships) version 8.30.

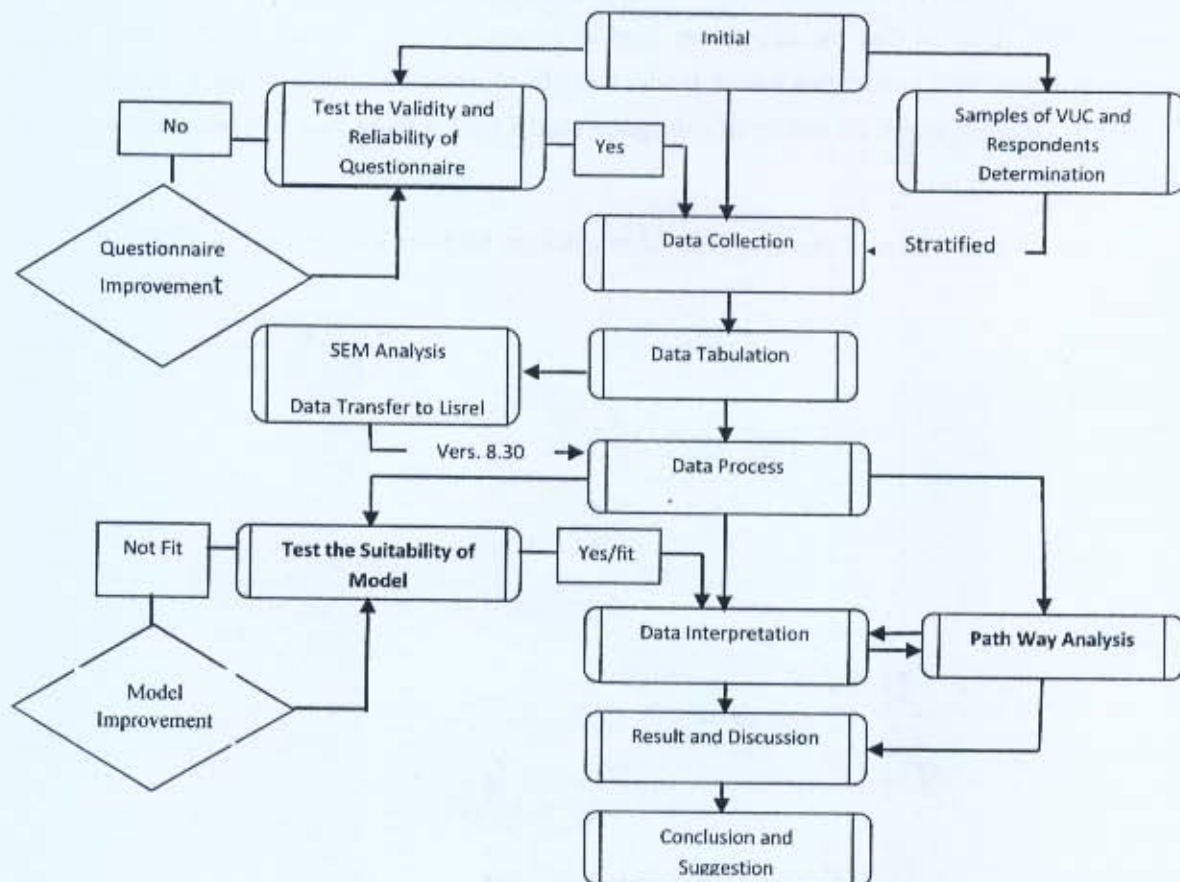
Location selection research was done on purpose (purposive), that research conducted in Province of West Java with a shot in the northern coastal area (lowlands), namely the Karawang District, and in the south (mountains), ie, Cianjur District. Research was done in two phases namely: (1) Test the validity and reliability of the instrument by testing the questionnaire and (2) Collecting of secondary data and primary data. Pilot questionnaire conducted in VUC Marga Mukti, Cianjur District through direct interviews with 30 respondents on December 5th to 16th 2009. Collecting secondary and primary data conducted at the study site Karawang and Cianjur District on December 20th, 2009 through the end of March 2010.

The population in this study is VUC's personnel who are registered as members of VUC. From VUC with moderately active category are determined respectively as five VUC samples of research in Karawang and Cianjur District. Taking the models of VUC carried to the VUC quite active categories were randomly stratified or stratified random sample. The observation of the condition of 42 cooperation in the Karawang District showed that based on the three groupings of VUC quite active there are nine VUC (21.4 percent), 18 VUC still active (42.9 percent) and 15 VUC inactive (35.7 percent). Condition 36 VUC in Cianjur District indicate that there are eight VUC quite active (22.2 percent), 16 VUC still active (44.5 percent) and 12 VUC inactive (33.3 percent). List of names in the Karawang District VUC samples are : (1) Sri Mulya, (2) Sumber Padi, (3) Warga Bakti, (4) Warga Tani, (5) Mitra Tani and in Cianjur District VUC samples are (1) Pelita Jaya (2) Betah, (3) Karya Simpati, (4) Sari Mekar, (5) Karya Mekar.

Remember the number of members of cooperatives that were too large, the respondents determined nonproportional. On the basis of these considerations the respondents in this study were determined by stratified sampling (stratified random sample) based members activity level in using

rice mills, which were grouped into two groups namely: active and inactive groups. Of the 100 names of users of these rice mills VUC 30 respondents drew randomly each VUC sample at each study site. In the writing test was limited to a match with the SEM results of communications model cooperative organizations in the development of agricultural mechanization in Karawang and Cianjur District. Flow chart of research activities can be seen in Figure 1.

Figure 1: Flow Chart of Research Activity



RESULT AND DISCUSSION

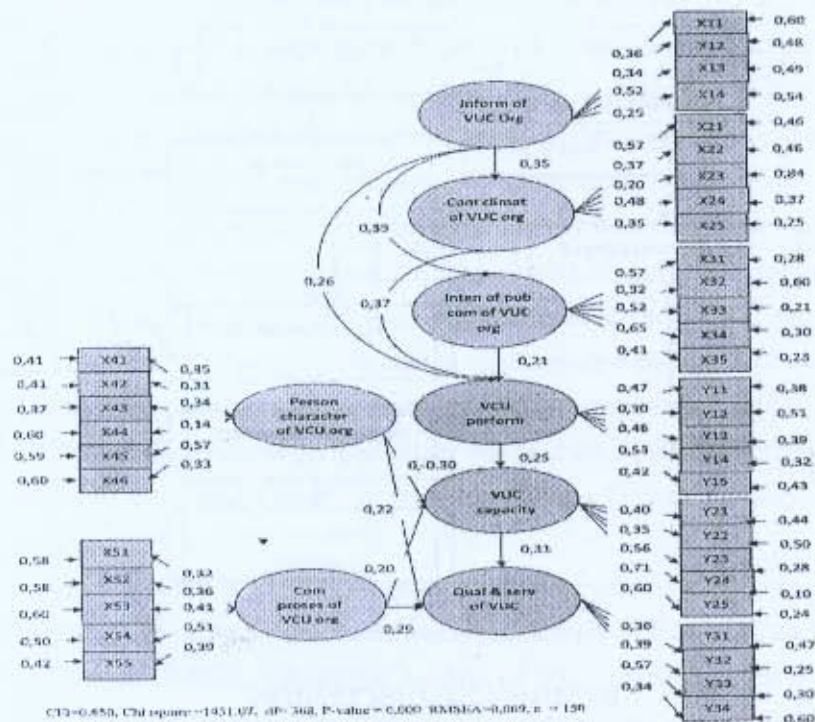
Test of Communication Model Suitability of VUC Organization

SEM analysis is basically test a structural model that can be used to predict a model and to determine the level of influence between free variables and bound variables. Path analysis with SEM to test the causal relationship between variables. Causal relationship between variables was visualized in the form of diagrams and to determine the suitability of the model could be done through the compatibility test measurement model. By using SIMPLIS 8:30 to produce a model path diagram based on the criteria of *goodness of fit* (GOF).

According to Kusnendi (2008) and Sugiyono (2010) compatibility test between theoretical models and empirical data could be viewed at the level of Goodness of Fit (GOF) of the results of

diagram that was the value of: Chi-square, Goodness-of-Fit Index (GFI), Root Mean Square Error of Approximation (RMSEA), Adjusted Goodness of Fit Index (AGFI) and the Comparative Fit Index (CFI). As a reference of the structural model of the relationship compatibility test factors that affect each variable used several criteria namely: Chi-square value that the smaller was better, RSMEA value ≤ 0.08 ; value of GFI ≥ 0.90 ; value of AGFI $\geq 0, 90$; CFI values ≥ 0.90 . According Kusnandi (2008) measure of absolute fit most major versions of LISREL analysis is the value of chi-square and RMSEA that could be known from the output path diagram view LISREL analysis. Furthermore Wijanto (2008) asserted that the chi-square used to test how close a match between the sample covariance matrix with covariance matrix model was chi-square distribution indicated by the value of $p \geq 0.05$. To complement the results of chi-square used RMSEA value that was indicated by value ≤ 0.08 .

Figure 2: Path Diagram of Organizational Communication Model of VUC in Karawang District

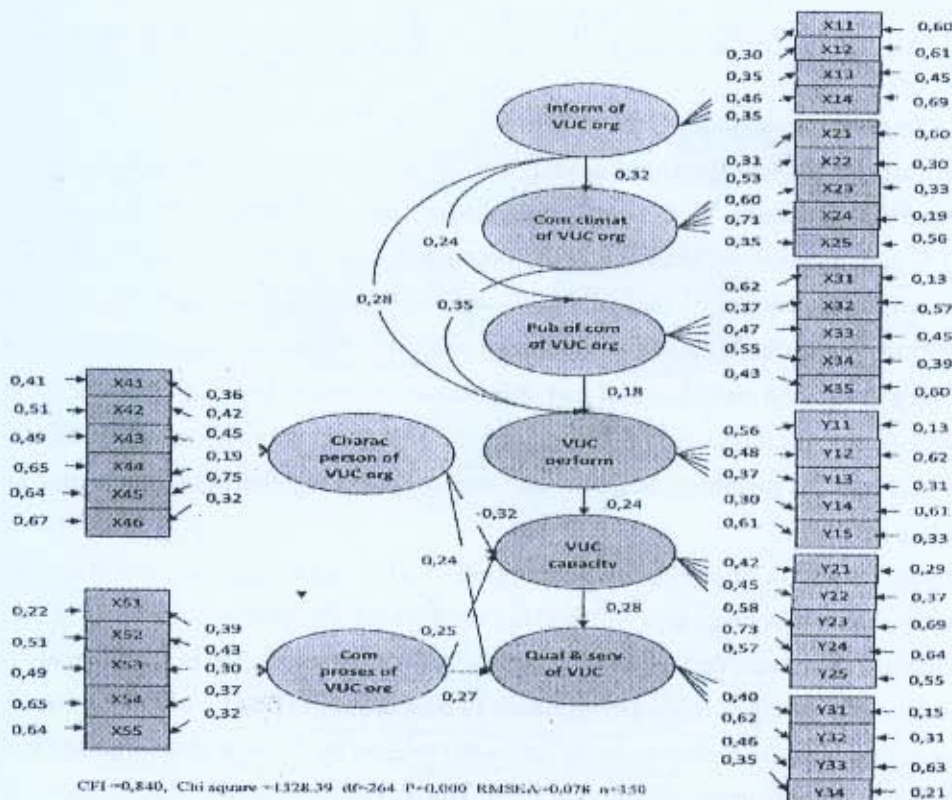


From the path diagram of organizational communication model of VUC in the Karawang District, as shown in Figure 2 shows that in the Karawang District calculate p-value = 0.000 < 0.05, chi-square value of 1431.07, RMSEA = 0.069 value < than 0.08; value AGFI = 0.910 > 0.90, GFI = 0.850 value close to 0.90, CFI = 0.830 value close to 0.90. From the SEM image path diagram could be know the path coefficient between variables, measurement error value (error), confirmatory factor coefficients and measurement error for each indicator variable and the results of analysis of the relationship between variables.

According to path diagram of organizational communication of VUC in Cianjur District, as

shown in Figure 3 shows that the calculated p value = 0.000 <0.05, chi-square value of 1328.39, RMSEA = 0.078 value <than 0.08, the AGFI = 0.930 > 0.90, GFI = 0.870 value close to 0.90, CFI = 0.840 value close to 0.90. The result of path diagram for each model parameter estimation VUC organizational communication in Karawang and Cianjur District seen that the values associated with test criteria based on the model fit GOF test showed that overall quite fit (good) and closed to good (marginal fit).

Figure 3: Path Diagram Organizational Communication of VUC in Cianjur District



The measure index value of goodness of fit in Cianjur District looked a little higher or means better than in the Karawang District. According to Kusnandi (2008) and Wijanto (2008) if the test result matches the communication model met the criteria of the index size was feasible model was developed. With more detailed attention to the path coefficient value of variables, the coefficient of each indicator and the error in the model path diagram VUC organizational communication at each study site there were some similarities and some differences, indicating that characteristics also determine the location of the building VUC professional and modern farming. In detail the results of goodness of fit refers to the criteria of the index size chart analysis and SEM in the Karawang District of Cianjur District could be seen in Table 1.

Table 1: Result of *Goodness of Fit* Model of Organizational Communication Organization of VUC Sample in Karawang District and Cianjur District

Criteria of Size Index	Reference Value (Cut off value)	Result		Evaluation of Model
		Karawang	Cianjur	
<i>Chi square</i>	$p \leq 0,05$	1431,07 ($p=0.000$)	1328,39 ($p=0.000$)	Did not differ between the actual input with predictive input
RMSEA	≤ 0.08	0,069	0,078	Good
AGFI	$\geq 0,90$	0,910	0,930	Good
GFI	$\geq 0,90$	0,850	0,870	Approaching to Good
CFI	$\geq 0,90$	0,830	0,840	Approaching to Good

Performance Improvement of VUC

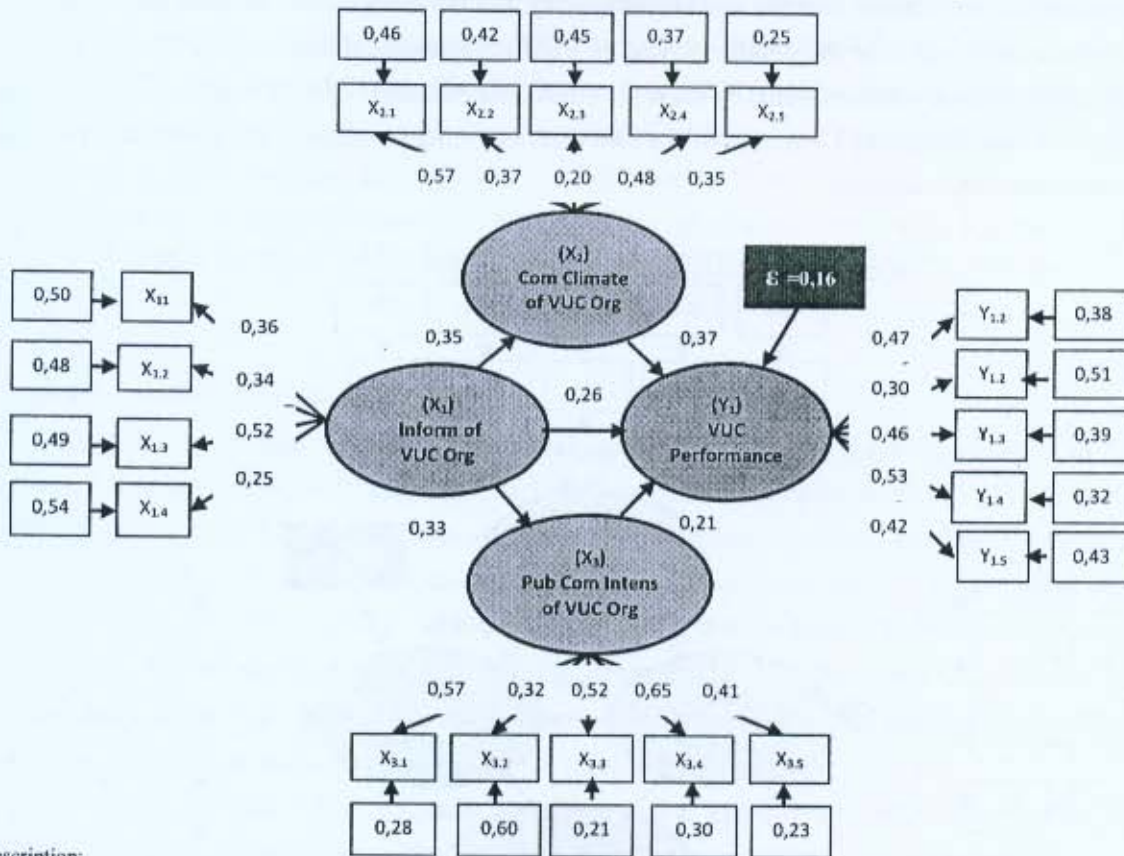
From the path diagram of structural model of VUC's performance in the Karawang District in Figure 4 showed that generally, VUC's performance condition was relative weak as result from poor quality of VUC organization information, VUC organizational climate was not conducive and the weak intensity of public communication of VUC organization. The low communication climate of VUC organizations supported by the versatile role of weak indicators such as low levels of relevance, accuracy, completeness and timeliness of any information received by VUC personnel. Similarly, the role of organizational climate of VUC had not been able to create conducive conditions such as increased support from its members, building openness, develop togetherness, create trust and foster a sense of justice of VUC.

The intensity condition of public communication of VUC organizations were also classified as still weak mainly due to private parties who had not shown a meaningful role. The role of community leaders and customer communications of VUC was a very dominant factor in the intensity of public communication to give an effect to the performance of cooperation. The role of government in public communications organization looked even decline was replaced by the role of community leaders and intensity of public communication of VUC customer. The role of government in the intensity of public communication related to VUC organizational communication associated with the development of cooperatives decreased along with government policies that revoke some coaching facilities to VUC. In addition, decreasing the intensity of public communication VUC organization also occur due to local government policies that made several mutations employees within the agency associated with the cooperative.

More details of Figure 4 showed that the dominant factor which directly affects the VUC performance in a row was a variable of the VUC organizational climate, quality and intensity of VUC organization information of public communication with the path coefficient (r) respectively were 0.37, 0.26 and 0.21. There was measurement error value (error) at the level of VUC performance of 0.16 means that there were 16 percent of other factors that give effect to increase the performance of cooperation in the Karawang District. Climatic factors directly affect most of the VUC performance ($r = 0.37$) with the dominant influence of the indicator is the support and trust with members of VUC

coefficient of each factor of 0.57 and 0.48. In accordance with the principles of cooperation in which the common good is the main characteristic of the formation of cooperation, the factor of support and trust the members to the VUC is an important determinant of the success of a cooperation. So to create a conducive organizational climate of VUC in improving performance needs to be seriously further improving the support and trust the members to the cooperation can be created.

Figure 4: Path Diagram of Performance Structural Model of VUC in Karawang District



Description:

Variable X : $X_{1.1}$ = relevance; $X_{1.2}$ = accurate; $X_{1.3}$ = completeness; $X_{1.4}$ = timeliness

$X_{2.1}$ = support member; $X_{2.2}$ = openness; $X_{2.3}$ = togetherness; $X_{2.4}$ = trust; $X_{2.5}$ = justice

$X_{3.1}$ = government; $X_{3.2}$ = private; $X_{3.3}$ = customer; $X_{3.4}$ = comm leader; $X_{3.5}$ = internal VUC

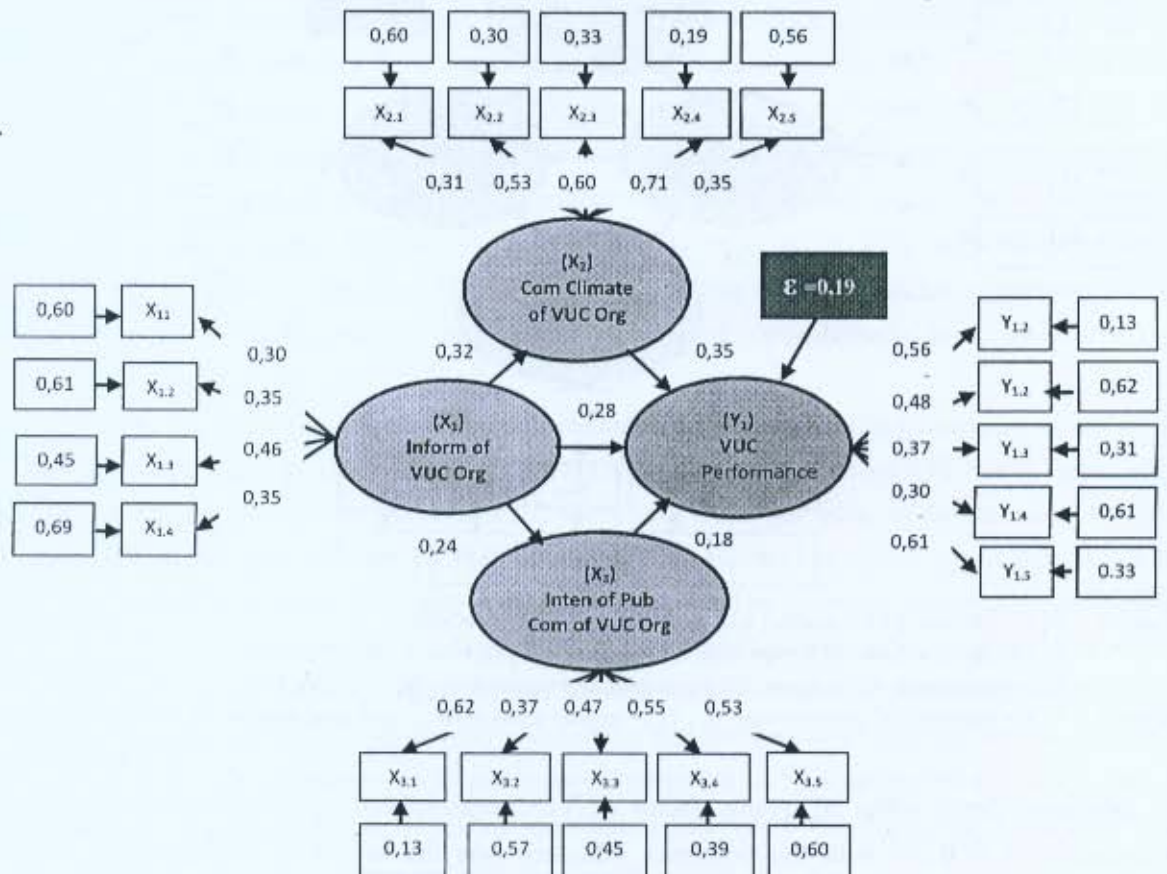
Variable Y : $Y_{1.1}$ = leadership; $Y_{1.2}$ = supervisory role; $Y_{1.3}$ = program implementer; $Y_{1.4}$ = tech application; $Y_{1.5}$ = RAT implementer

Dominant direct effect of quality factor of VUC organizational information toward VUC performance ($r = 0.26$) with the dominant influence was the aspect of completeness of the information with the value of the coefficient of 0.52 factor. Dominant direct influence from intensity factors of public communication of VUC organization is an aspect of community leaders with a coefficient factor of 0.65 and it's followed by customer indicator and internal of VUC with each factor coefficient 0.52 and 0.4. It is revealed that the completeness of the information and public figures were very dominant role played directly on improving the performance of VUC. Can be understood that with incomplete information and even less the role of community leaders in VUC organizational communication increasingly difficult for VUC to develop as a more advanced farming cooperation. Indirectly influenced by the performance of the VUC organization's information through

VUC organizational climate and public communication intensity of VUC organization with path coefficient (r) respectively 0.35 and 0.33. Indicators factor of private occupy the intensity level of public communication of VUC organization lowest in the Karawang District.

As shown in Figure 5, shows that the performance of cooperation in Cianjur District has a relatively same condition that was relatively weak compared with the VUC performance categories in the Karawang District. In more detail showed that the climatic conditions of organizational communication in Cianjur District was dominated by the influence factor of trust and support of members to the creation of the conduciveness of VUC organizational communication climate. The level of performance was dominated by the role of the implementation of RAT were considered by the members of cooperation as a democratic medium that determine the success of farmers' cooperation as an economic organization

Figure 5: Path Diagram of Performance Structural Model of VUC in Cianjur District



Description:

Variable X : X1.1 = relevance; X1.2 = accurate; X1.3 = completeness; X1.4 = timeliness

X2.1 = member support; X2.2 = openness; X2.3 = togetherness; X2.4= trust; X2.5 = justice

X3.1 = government; X3.2= private; X3.3= customer; X3.4= comm. leader; X3.5= internal VUC

Variable Y : Y1.1 = leadership; Y1.2= supervisor role; Y1.3= prog. Implementer; Y1.4= tech application; Y1.5= RAT implementer

The overall rate of VUC performance in Cianjur District directly influenced by VUC organization's information factors, VUC organizational climate and intensity of public communication of VUC organization with path coefficient (r) with each value was 0.28, 0.35 and 0.18 . Indirectly influenced

by the VUC organizational information performance through the intensity of organizational climate and public communication of VUC organization with path coefficient (r) respectively 0.24 and 0.32. Error value Measurement (error) on the VUC performance level of 0.19. In fact, often found VUC personnel to obtain and apply information that was incomplete, giving rise to losses in the development of cooperatives, therefore, in creating quality information to consider completeness of the information in accordance with the needs of VUC personnel.

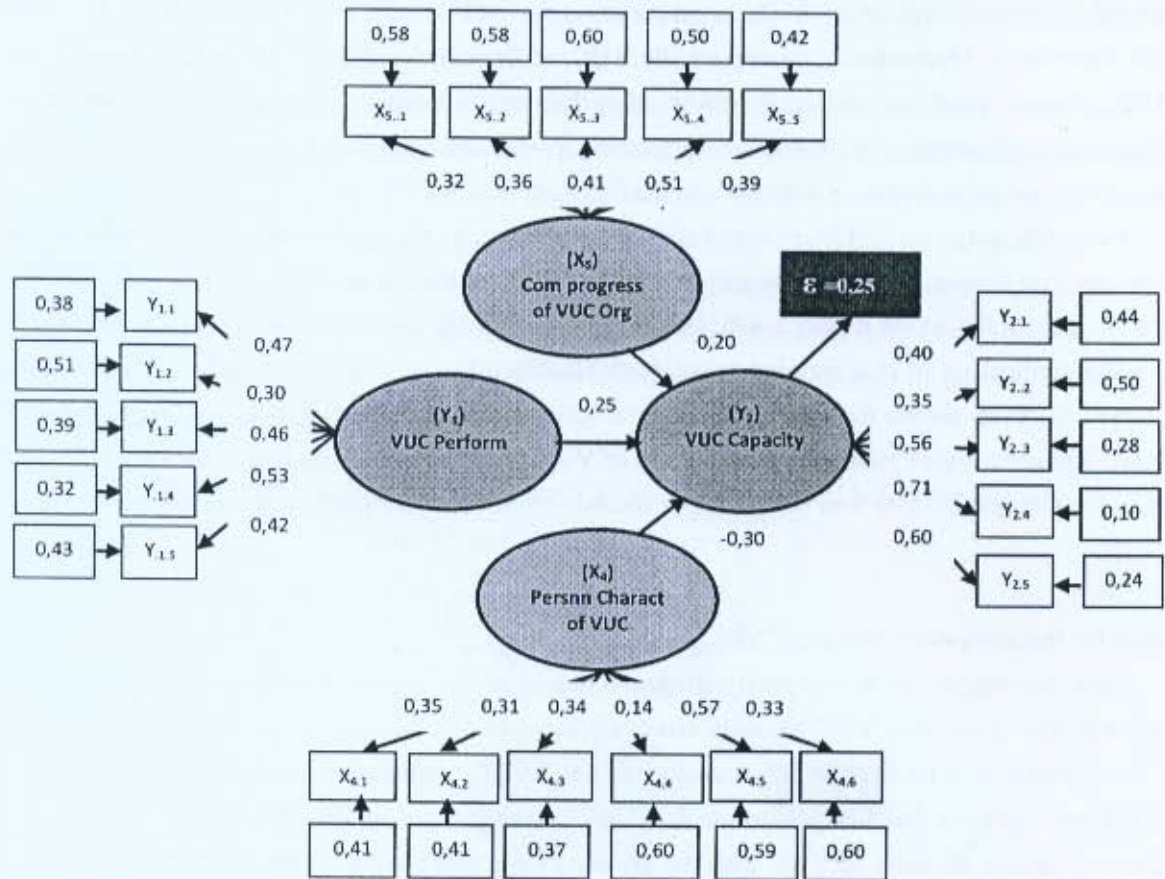
The interesting one in Figure 5 is that VUC personnel in Cianjur District very understanding about the importance of the implementation of the RAT as the highest forum in the cooperatives as indicated by the value of the coefficient factors from VUC performance indicators variable of 0.61 and application of rice farming technology classified lowest coefficient factor of 0.30. When observed in depth shows that the organizational information factors of VUC, VUC organizational climate and intensity of public communication of VUC organizations, both in the Karawang District and in the Cianjur District was the principal elements that contribute to improving the performance of VUC.

Capacity Improvement Model of VUC

From the diagram path of capacity structural model of VUC in the Karawang District in Figure 6 showed that in general, VUC capacity relatively in weak condition as result of poor performance of VUC, lacked of VUC personnel characteristics and VUC organizational communication process had not been optimal. The low performance of VUC as was previously described make an immediate impact to the low capacity of VUC with the understanding that the higher the performance of VUC will give an effect to the level of capacity of VUC. Characteristic condition of VUC personnel was a significant impact on the capacity of VUC by increasing understanding of the characteristics of VUC personnel can have an impact on decreasing the level of VUC capacity.

The reduced level of VUC capacity could occur due to aspects of education, experience of cooperation, the courage to face risks and cosmopolite. The increased role of the indicators of the characteristics of VUC personnel raises the further VUC personnel from cooperation therefore, efforts to build the characteristics of VUC personnel must consider the principles seriously and principles of cooperatives were characterized by togetherness and kinship. Conditions at the site showed that farmers had high courage in facing the risk of using the technology. The dominance of the influence of high courage in the face of risk can affect the low VUC personnel responsibilities and negatively impact VUC capacity in achieving program goals or objectives of VUC. In the process of organizational communication of VUC showed that indicators of communication effectiveness and quality of communication channels gave an effect to dominate the role of VUC communication process in the Karawang District, so it can be said that VUC service quality was strongly influenced by the courage level to take risks and effectiveness of VUC organizational communication processed.

Figure 6: Path Diagram of Structural Model of VUC Capacity in Karawang District



Description:

Variable X: $X_{4.1}$ = age; $X_{4.2}$ = education; $X_{4.3}$ = non-formal education; $X_{4.4}$ = cooperative experience; $X_{4.5}$ = courage to face risk; $X_{4.6}$ = cosmopolite level

$X_{5.1}$ = communication flowed; $X_{5.2}$ = feed back; $X_{5.3}$ = communication channel; $X_{5.4}$ = communication effectiveness; $X_{5.5}$ = communication utilization.

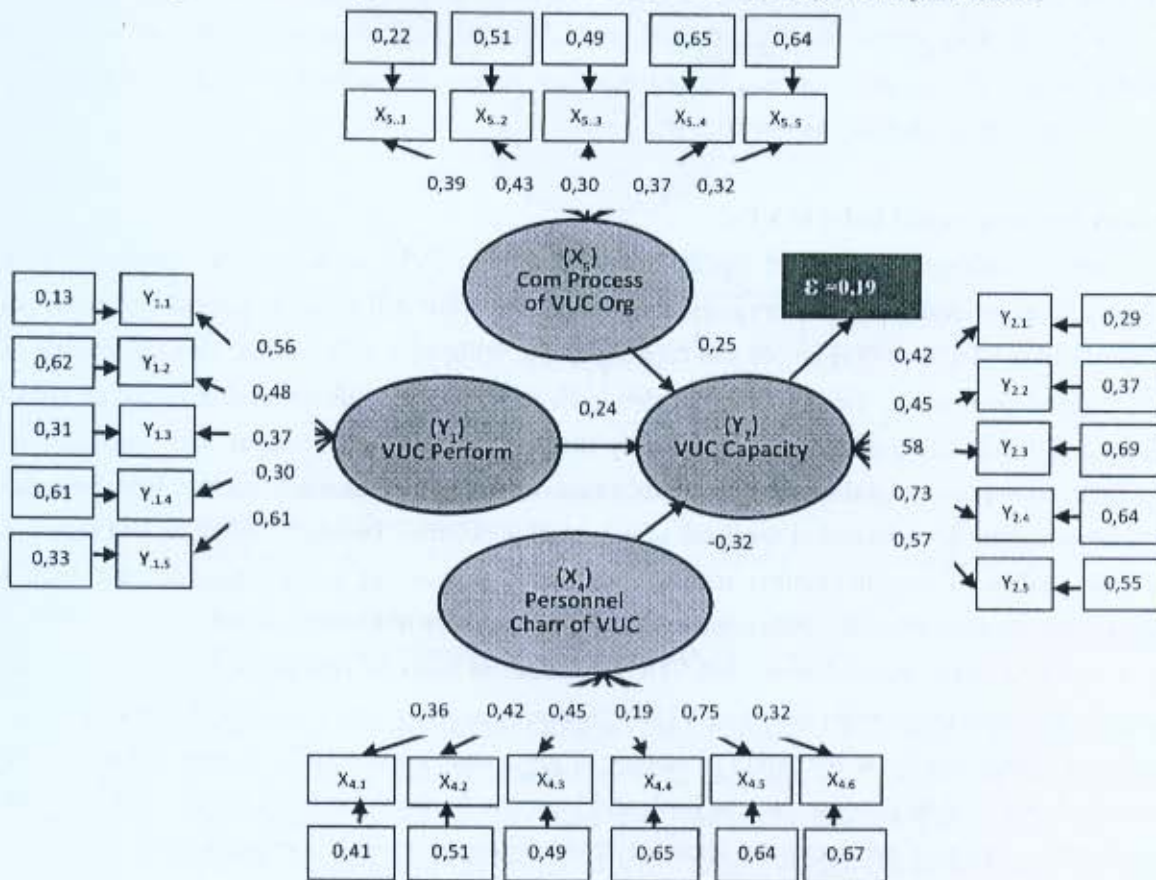
Variable Y: $Y_{1.1}$ = leadership; $Y_{1.2}$ = supervisory role; $Y_{1.3}$ = program implementer; $Y_{1.4}$ = tech application; $Y_{1.5}$ = RAT application
 $Y_{2.1}$ = capital; $Y_{2.2}$ = marketing; $Y_{2.3}$ = input saprotan; $Y_{2.4}$ = human resouces; $Y_{2.5}$ = SHU

More detailed Figure 6 showed that the VUC capacity in the Karawang District was directly affected by the VUC performance, personnel characteristics and organizational communication processes of VUC with path coefficient (r) of each is 0.25, and 0.20 -0.30 error value of 0.25. There was a negative value of the coefficient of the characteristics of traffic on the capacity of VUC personnel and found the courage to face the risk factor was the most dominant factor affecting the level of VUC capacity as the dominant first order and followed by cooperation experience factors as the dominant second order. This can be interpreted that high courage in the face of risk can negatively impact the VUC capacity, in which VUC personnel often do not consider the risk of failure or loss in VUC capacity, so that many VUC programs do not work well. Likewise, the experience of cooperatives show that increasing experience does not guarantee VUC that being concerned will be more active to increase the capacity of VUC.

From field observation showed that the VUC capacity as farmers' economic organization which was based on togetherness and kinship had not been consistent and consistently refer to a common

interest in building a more advanced farming. Understanding the principles of cooperation has not been interpreted correctly by VUC personnel so that the participation of members did not grow optimally. VUC program planning had not been implemented in a democratic, much influenced by various interests to take advantage of VUC. VUC performance was not always in line with the VUC capacity in which the role of the VUC personnel characteristics and VUC organizational communication processes very influential. To increase participation of VUC personnel in VUC capacity improvement required pattern of non-formal education to raise awareness of cooperation and the acceleration of adoption of agricultural technology innovation with the support of dynamic process of effective communication and efficient organization. Non-formal education programs and extension activities to enhance the capacity of cooperation in the Karawang District hasn't gotten the target.

Figure 7: Path Diagram of Structural Model of VUC Capacity in Cianjur District



Description:

- Variable X: $X_{4.1}$ = age; $X_{4.2}$ = education; $X_{4.3}$ = non-formal education; $X_{4.4}$ = cooperative experience; $X_{4.5}$ = courage to face risk; $X_{4.6}$ = cosmopolite level
 $X_{5.1}$ = communication flowed; $X_{5.2}$ = feed back; $X_{5.3}$ = communication channel; $X_{5.4}$ = communication effectiveness; $X_{5.5}$ = communication utilization.
- Variable Y: $Y_{1.1}$ = leadership; $Y_{1.2}$ = supervisory role; $Y_{1.3}$ = program implementer; $Y_{1.4}$ = tech application; $Y_{1.5}$ = RAT application
 $Y_{2.1}$ = capital; $Y_{2.2}$ = marketing; $Y_{2.3}$ = input saprotan; $Y_{2.4}$ = human resouces; $Y_{2.5}$ = SHU

As shown in Figure 7 the VUC capacity of in Cianjur District was not much different from the situation of VUC capacity in the Karawang District where the VUC capacity was directly affected by VUC performance, VUC personnel characteristics and VUC organizational communication

processes with path coefficient (r) of their respective variables were 0.24, -0.32 and 0.25 with a value of measurement error (error) of 0.19. Differences of VUC capacity conditions in the Karawang District with the VUC capacity in Cianjur District, was located on the dominant characteristic indicators of VUC personnel gave an effect to the level of capacity VUC, non-formal education with factor coefficients value of 0.45 and the lowest contribution was the experience of cooperatives with a coefficient factor 0.19.

Feedback Indicators factors were the factors that dominate the influence of VUC organizational communication processes. If these factors were associated with the level of VUC capacity gave a negative impact on quality of VUC service in the sense of courage to take risks in the environment may cause the failure of members to the VUC activities. This happens because every program with help from various sources often mean that the risk of failure will not get the sanction from VUC or other parties who provide facilities that require responsibility. This condition was getting worse because of poor communication and lacked of effectiveness of feedback in VUC organizational communication processes in Cianjur District.

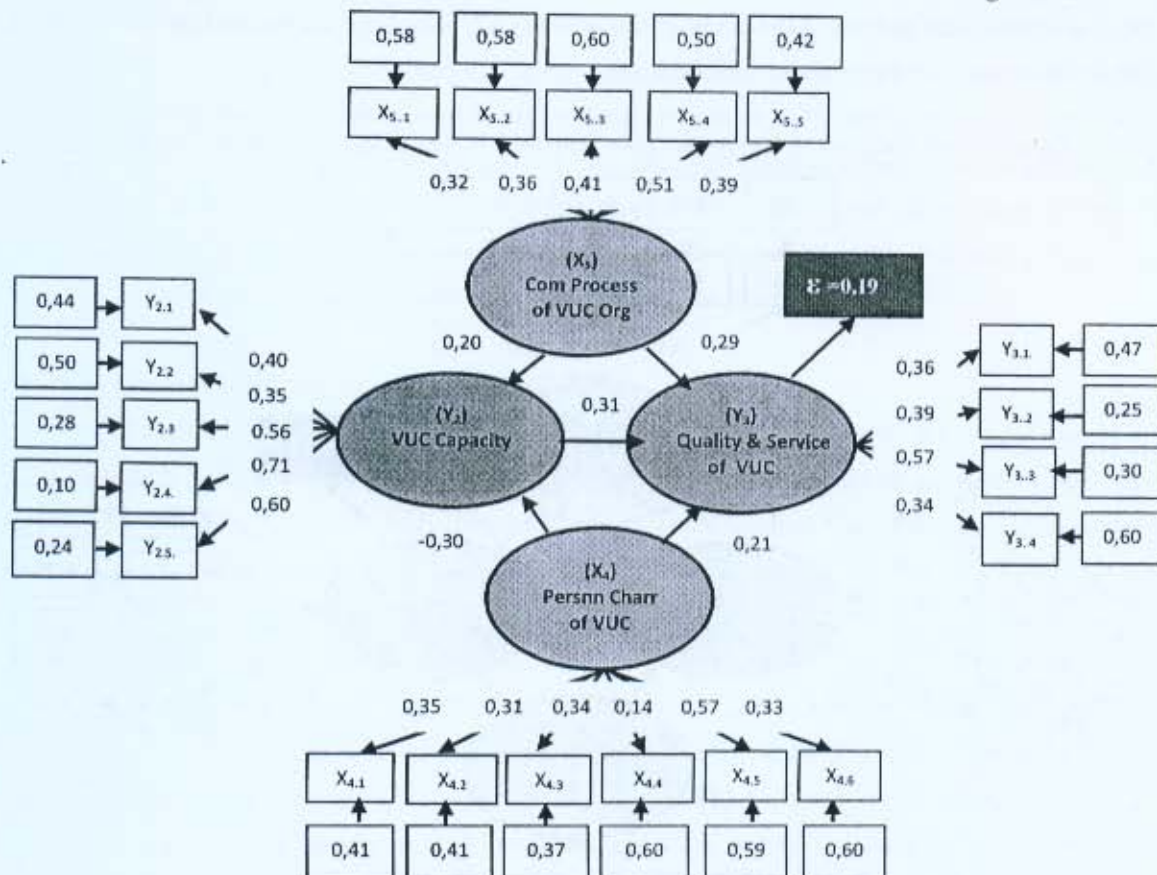
Quality Improvement Model of VUC

From path diagram of services quality structural model of VUC in Karawang District at figure 8 showed that generally VUC's services quality condition were still weak in Karawang District as result of lower VUC's performances and capacity in the utilization of rice mills. Services quality of VUC toward members in the utilization of rice mills in Kabupaten District is dominated by social indicator influent, while other indicators evenly that are technical, economical, and time. Low of communication process quality of VUC organization caused by indicator role such as low dynamics of communication flow, lacked of feedback of information occurred between the sender and receiver, the low quality of communication media, uneffective process of communication and VUC's organizational communication utilization by VUC personnel has not been optimal.

From field observation showed that VUC personnel as users of rice mills, there were several factors to be considered when selecting VUC's rice mills as there was a sense of belonging VUC, a sense of confidence about the safety of storage of grain and rice in VUC's storage and utilization product of rice milling process such as husk and bran can be used freely by VUC manager. With the understanding that the necessary attention from various parties in communication with VUC personnel to consider seriously the factors associated with the principle of cooperation in developing VUC.

Detail of Figure 8 showed that the level of service quality of VUC in the Karawang District directly influenced by the capacity of VUC, VUC personnel characteristics and VUC organizational communication processes with path coefficient (r) of each was 0.31, 0.21 and 0, 29 with the value of measurement error (error) on VUC service quality level of 0.19. The level of VUC's service quality in the VUC development in the Karawang District was low and if linked to organizational communication model shows that the economic factor with a coefficient factor of 0.59 was the dominant factor impacting the service quality rice mills

Figure 8: Path Diagram of Service Quality Structural Model of VUC in Karawang District



Description:

Variable X: X_{4.1} = age; X_{4.2} = education; X_{4.3} = non-formal education; X_{4.4} = cooperative experience; X_{4.5} = courage to face risk; X_{4.6} = cosmopolite level

X_{5.1} = communication flow; X_{5.2} = feedback; X_{5.3} = communication channels; X_{5.4} = communication effectiveness; X_{5.5} = communication utilization.

Variable Y: Y_{2.1} = capital; Y_{2.2} = marketing; Y_{2.3} = input saprotan; Y_{2.4} = human source quality; Y_{2.5} = SHU

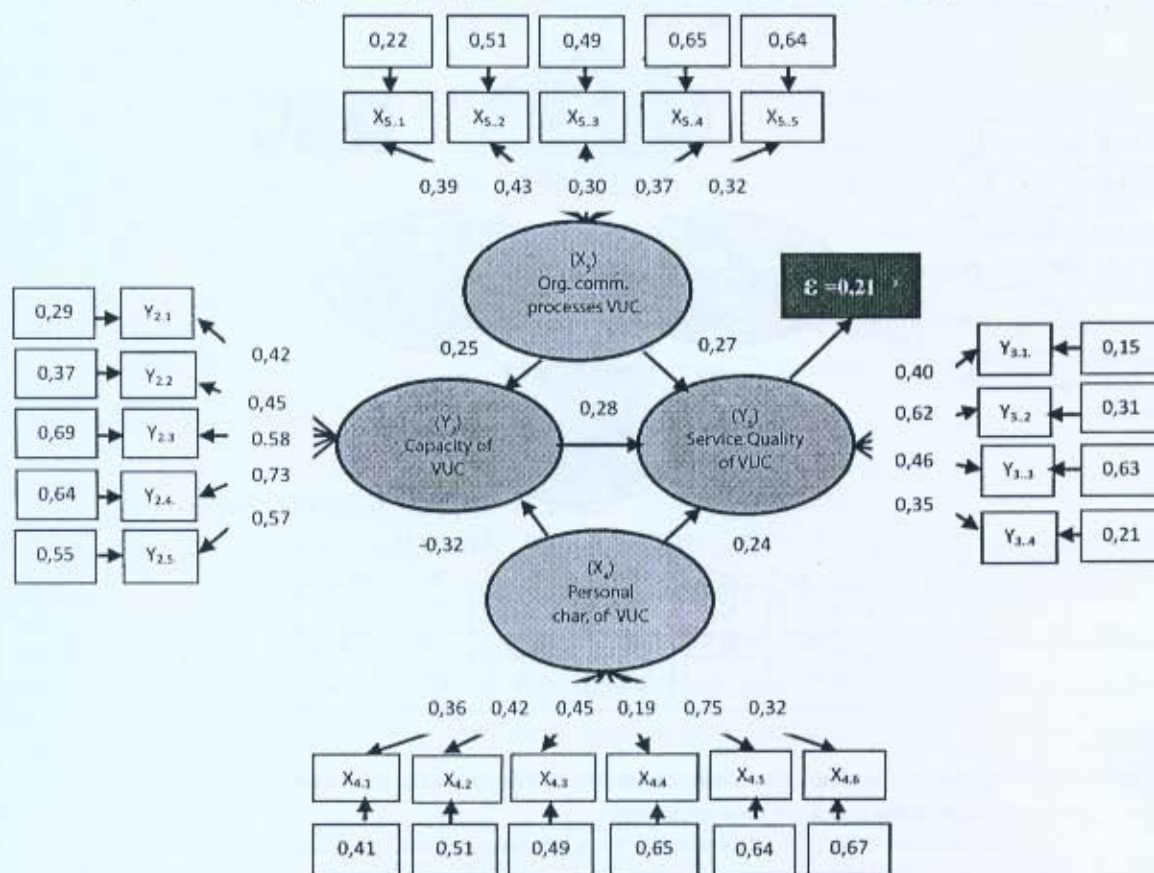
Y_{3.1} = technique aspect; Y_{3.2} = economic aspect; Y_{3.3} = social aspect; Y_{3.4} = time aspect

Just as in the Karawang District had seen also in Cianjur District, as showed in Figure 9 that the level of VUC service quality is directly affected by VUC capacity, VUC personnel characteristics and VUC organizational communication processes with path coefficient (r) of each was 0.28 , 0.27 and 0.24. This condition means that the factor of VUC organizational communication processes dominating influence on the level of VUC service quality. This was different from the VUC personnel characteristic influence on the VUC capacity. where a negative effect on the capacity of the VUC. If the note contained the value of measurement error (error) at the level of VUC service quality of 0.21 which means that there was other indicators that were not measurable affect the level of VUC service quality VUC.

In more detail visible in Figure 9 that from the aspect of the dominant characteristics of VUC personnel affect the quality of VUC service was the courage to face the risk factor with a coefficient of 0.75 and the lowest factor of influence was the experience of cooperatives with a coefficient factor of 0.19. While the factor of VUC organizational communication processes dominant aspect affecting

the quality of VUC services was the feedback factor with a coefficient of 0.43 in terms of smoothness of the communication process that occurs in the internal VUC largely determined by the feedback between the sender and the recipient information.

Figure 9: Path Diagram of Quality Services Structural Model of VUC in Cianjur District



Description:

Variable X: $X_{4.1}$ = age; $X_{4.2}$ = education; $X_{4.3}$ = non-formal education; $X_{4.4}$ = cooperative experience; $X_{4.5}$ = courage to face risk; $X_{4.6}$ = cosmopolite level

$X_{5.1}$ = communication flow; $X_{5.2}$ = feedback; $X_{5.3}$ = communication channels; $X_{5.4}$ = communication effectiveness; $X_{5.5}$ = communication utilization.

Variable Y: $Y_{2.1}$ = capital; $Y_{2.2}$ = marketing; $Y_{2.3}$ = input saprotan; $Y_{2.4}$ = human source quality; $Y_{2.5}$ = SHU

$Y_{3.1}$ = technique aspect; $Y_{3.2}$ = economic aspect; $Y_{3.3}$ = social aspect; $Y_{3.4}$ = time aspect

If compared to VUC service quality indicators in Cianjur District to Karawang District had seen that there were different dominant factors that influenced the social aspects with a coefficient factor of 0.57 in the Karawang District and economic aspects with a coefficient factor of 0.62 in Cianjur District. Aspects of time occupy the lowest effect with a coefficient of each factor in the Karawang District and Cianjur District of 0.34 and 0.35. From the results of path coefficient analysis in both the diagram and in the Karawang District of Cianjur District indicate that there was a similarity of descriptive analysis carried out previously.

When investigated more in depth shown that the level of VUC service quality in the Karawang District and Cianjur District was the dominant factor influencing the difference in the Karawang

District influence the social aspect was more dominant, while in Cianjur District dominant influence over the economic aspects. This condition occurs due to environmental factors where the factor of unity in the Karawang District higher due to the centralized settlement patterns in rural areas which provide opportunities to communicate between the members of VUC personnel more intensive and open. Meanwhile, in Cianjur District seen that the pattern of rural settlement was dispersed so that the relatively more limited opportunities to communicate. From the observations made in Karawang and Cianjur District increasingly believed that consideration of the potentials and local characteristics was crucial in building a cooperative of farmers and farm more modern.

Services Quality Improvement Strategy of VUC

To get a strategy in improving the quality of VUC services as one of the major role of VUC in accordance with the framework of thought in this study conducted an analysis of various relevant variables in it namely: VUC organizational service quality, VUC capacity, VUC personnel characteristics, and the communication process of VUC organization.

VUC Capacity

Some aspects of the VUC capacity who had influence in the quality of VUC services in the Karawang District were (1) Aspects of the quality of human resources and (2) Aspects of the SHU, while in Cianjur District were (1) Aspect of capital and (2) Saprotan input aspect. How big was the correlation between aspects of VUC capacity and VUC services delivery could be seen in the correlation matrix of VUC capacity with VUC organizations quality services in Karawang and Cianjur District in Table 2.

Conditions in the Karawang District showed by value correlation matrix of VUC capacity with VUC quality services in which the relationship between capital with technical aspects of service utilization of rice mills had a real positive relationship ($p < 0.05$). Similarly, the relationship between the marketing of products had a positive association significantly ($p < 0.05$) with the technical aspects. Meanwhile, the analysis results of research conducted in Cianjur District showed that the quality of human resources gives a real positive relationship ($p < 0.05$) on the technical aspects of the utilization of rice milling services for members of VUC. With increased capital, product marketing, input of saprotan, quality human resources and SHU acquisition of VUC in the Karawang District and Cianjur District gave an effect to the level of VUC service quality.

Table 2: Correlation Matrix of Organization Capacity to Services Quality of VUC Sample in Karawang and Cianjur District

Capacity Aspects of VUC	Services Quality Aspects of VUC (rs)			
	Y _{3,1}	Y _{3,2}	Y _{3,3}	Y _{3,4}
Karawang District				
Y _{2,1}	0,195*	0,067	0,155	0,071
Y _{2,2}	0,204*	0,062	0,158	0,237**
Y _{2,3}	0,274**	0,154	0,182*	0,082
Y _{2,4}	0,256**	0,229	0,369	0,346*
Y _{2,5}	0,472*	0,377	0,459	0,305*
Cianjur District				
Y _{2,1}	-0,060	0,013	0,097	0,345
Y _{2,2}	0,107	0,118	0,030	0,105
Y _{2,3}	0,080	0,136	0,115	0,295**
Y _{2,4}	0,175*	0,342**	0,103	0,212*
Y _{2,5}	0,153	-0,059	0,037	0,097

Description :

- 1) r_s = rank Spearman correlation: *) significant at $\alpha_{0,05}$, **) very significant at $\alpha_{0,01}$
- 2) VUC service quality : Y_{3,1} (technical aspect), Y_{3,2} (economical aspect), Y_{3,3} (social aspect), Y_{3,4} (time aspect)
- 3) VUC capacity: Y_{2,1} (capital), Y_{2,2} (marketing), Y_{2,3} (input saprotan), Y_{2,4} (human resource quality) and Y_{2,5} (SHU)

In accordance with one of the major role of VUC was to provide service to members and the main activity in VUC example was the utilization of rice milling, hence increasing role of VUC as an economic organization of farmers in the countryside was largely determined by the level of service provided to members of VUC. Based on the activities conducted at locations rice mill which was a central meeting between the production, post harvest, processing and marketing of paddy/rice that were important in the supply chain of rice and rice in the provision of national contributions to support national food security.

In line with the opinions of Sinaga et al. (2008) that the role of Small and Medium Enterprises and Cooperation in improving people's economy in the real sector was a reality in national economic activity were very important and strategic, to enhance the role and function of VUC need to consider the suitability of the potential of natural resources, human resources potential, market opportunities, sufficient capital support, utilization of information technology resources and support coordination among government institutions. In relation to VUC service quality improvement in the Karawang District and Cianjur District then to push forward the role of VUC should seriously consider the technical aspects, economic, social and time in optimizing the potential of existing resources in the area. Problems of production lost in rice processing on postharvest activity was still high and the added value obtained by the farmers was still low competitive yet fair to develop into the rice mill or global free trade.

Personnel Characteristic of VUC

Some aspects of the characteristics of VUC personnel who had influence on the quality of VUC services in the Karawang District were (1) Aspects of courage to face risk and (2) Aspects of the experience of cooperatives, whereas in Cianjur District were (1) Aspects of courage to face risk and

(2) Aspects of non-formal education. How big was the correlation between aspects of VUC personnel characteristics with VUC service quality characteristics could be seen in the correlation matrix of VUC personnel with VUC quality services Karawang and Cianjur District in Table 3.

Based on the interpretation of Spearman rank analysis showed that there was a relationship between VUC personnel characteristic with quality of VUC services, which showed that conditions in the Karawang District there was a real positive relationship ($p < 0.05$) between aspects of the formal education of VUC personnel characteristics toward capital aspect. Similarly, the relationship between the courage to face risks with capital have a positive relationship significantly ($p < 0.05$). Meanwhile, the analysis results of research conducted in Cianjur District showed that the courage to face a real risk of having a positive relationship ($p < 0.05$) with saprotan input in the development of rice farming members of VUC.

Table 3 : Correlation matrix of VUC Sample Personnel to Services Quality of VUC in Karawang and Cianjur District

Indicator of Variables X_i	Indicator of Variables Y_j (rs)			
	$Y_{3,1}$	$Y_{3,2}$	$Y_{3,3}$	$Y_{3,4}$
Karawang District				
$X_{4,1}$	0,443	0,257*	0,305	0,299
$X_{4,2}$	0,237*	-0,048	0,144	0,228
$X_{4,3}$	0,111	-0,023	0,110	0,112
$X_{4,4}$	0,443	0,257	0,305	0,299
$X_{4,5}$	0,237**	-0,048	0,144	0,228
$X_{4,6}$	0,111	-0,023	0,110	0,112
Cianjur District				
$X_{4,1}$	0,029	0,179	-0,083	0,062
$X_{4,2}$	-0,113	-0,062	0,205*	0,097
$X_{4,3}$	-0,038	0,129	0,061	0,075
$X_{4,4}$	0,039	0,184	-0,083	0,062
$X_{4,5}$	-0,103	-0,062	0,207*	0,097
$X_{4,6}$	-0,038	0,129	0,061	0,075

Description :

- 1) $rs = rank$ Spearman correlation: *) significant at $\alpha_{0,05}$, **) very significant at $\alpha_{0,01}$
- 2) VUC quality service: $Y_{3,1}$ (capital), $Y_{3,2}$ (marketing), $Y_{3,3}$ (input saprotan), $Y_{3,4}$ (human resource quality)
- 3) VUC personnel characteristic: $X_{4,1}$ (age), $X_{4,2}$ (education), $X_{4,3}$ (non-formal education), $X_{4,4}$ (cooperative experience), $X_{4,5}$ (courage to face risk) and $X_{4,6}$ (cosmopolite level)

Communication Process of VUC Organization

Some aspects of VUC organizational communication highly correlated with quality of VUC service in the Karawang District were (1) Aspects of communication effectiveness and (2) Aspects of communication channels, while in Cianjur District were (1) Aspects of feedback and (2) Aspects of communication flows. How big is the correlation between aspects of VUC performance with VUC capacity could be seen in the correlation matrix of VUC personnel characteristics with VUC capacity in Karawang and Cianjur District in Table 4.

From the results of Spearman rank analysis of meaning showed that there was a relationship of organization communication process with VUC services quality which was determined by several indicators that were the flow of communication, feedback, communication channels, communication

effectiveness and utilization of information communication. This condition was shown the correlation process of VUC organizational communication with VUC quality services, in which the relationship between feedback with aspects of tennis had a real positive relationship ($p < 0.05$) in the Karawang District. Similarly, the relationship between VUC organizational communication effectiveness had very significantly positive relationship ($p < 0.01$) with the technical aspects. By increasing the flow of communication, feedback, communication channels, communication effectiveness and utilization of information communication would improve the quality of VUC service in the Karawang District.

Table 4 : Correlation Matrix of VUC Organization Communication Process to VUC's Services Quality in Karawang and Cianjur District

Indicator of Variables X_s	Indicator of Variables Y_3 (rs)			
	$Y_{3,1}$	$Y_{3,2}$	$Y_{3,3}$	$Y_{3,4}$
Karawang District				
$X_{5,1}$	0,089	0,111	0,094	0,155
$X_{5,2}$	0,069	0,069	-0,010	0,254**
$X_{5,3}$	0,228**	0,221**	0,284	0,119
$X_{5,4}$	0,170*	0,148*	0,214**	0,050
$X_{5,5}$	0,151	0,225**	0,103	0,127
Cianjur District				
$X_{5,1}$	0,082	0,247**	0,118	0,158
$X_{5,2}$	-0,123	0,230**	0,024	0,054
$X_{5,3}$	-0,145	-0,062	0,082	0,119
$X_{5,4}$	0,104	0,172*	0,133	0,185*
$X_{5,5}$	0,127	0,223**	0,102	0,122

Description :

- 1) r_s = rank Spearman Correlation: *) significant at $\alpha_{0,05}$, **) very significant at $\alpha_{0,01}$
- 2) VUC service quality: $Y_{3,1}$ (technical aspect), $Y_{3,2}$ (economical aspect), $Y_{3,3}$ (social aspect), $Y_{3,4}$ (time aspect)
- 3) Organizational communication process of VUC: $X_{5,1}$ (communication flow), $X_{5,2}$ (feedback), $X_{5,3}$ (communication channel), $X_{5,4}$ (communication effectiveness) and $X_{5,5}$ (information communication)

Results of analysis of research conducted in Cianjur District showed that levels of communication channels showed highly significant positive relationship ($p < 0.01$) with the technical aspects. Similarly, also links the use of information had a positive influence significantly ($p < 0.01$) with economic aspects in an effort to improve the quality of service cooperatives. To increase services to members of cooperatives in relation to the role of agricultural mechanization, particularly in the use of very large machinery selectively increased the efficiency and effectiveness in production, in both the pre and post harvest activities regarding aspects in technical, economic and social. VUC organization's communication role in developing services to members of the VUC organization's communication process to increase the feedback and communication effectiveness was very important. Professional agricultural cooperation development paradigm with the level of the communication process with the dynamic organization of agribusiness and agricultural mechanization approach by utilizing agricultural information through a model of effective organizational communication of VUC became an alternative choice in the future.

Based on the analysis of Spearman rank correlation coefficient between performance to VUC capacity sample in Karawang and Cianjur District, as showed in Table 5 that there was a positive relationship and statistically significant with each value $t = 2.61$ and $t = 2.21$ or more greater than the value $t_{table} (1.96)$ ($\alpha = 0.05$). Similarly, between the VUC capacity and VUC organization services quality sample in Karawang and Cianjur Districts showed that there was a positive relationship and statistically significant with each value $t = 2.31$ and $t = 2.10$ or greater than the value $t_{table} (1.96)$ ($\alpha = 0.05$). From the results of hypothesis testing meaningful hypotheses first and second hypothesis was accepted.

Table 5: Correlation Work Coefficients to VUC Capacity and Services Quality of VUC Samples in Karawang and Cianjur District

Variables	t-value	t-table ($\alpha=0,05$)	Conclusions
Karawang District			
VUC performance(Y_1) with VUC capacity (Y_2)	2,61	1,96	Significant / positive influent
VUC capacity (Y_2) with services quality of VUC (Y_3)	2,31	1,96	Significant / positive influent
Cianjur District			
VUC performance(Y_1) with VUC capacity (Y_2)	2,21	1,96	Significant / positive influent
VUC capacity (Y_2) with services quality of VUC (Y_3)	2,10	1,96	Significant / positive influent

CONCLUSIONS

1. The main factors which obviously affects the performance of VUC were (a) Information quality factors, especially aspects of the relevance of information that often did not match the needs of VUC personnel and aspects of timeliness of the information was very low and not available when required by VUC personnel, (b) Organizational communication climate factor that was not conducive particularly weak aspect of trust and lack of members support to VUC and (c) Factor intensity level of public communication VUC organization that was still low, especially the role of the private sector is still very weak relating to the VUC work program.
2. The main factors which influence the level of VUC capacity VUC were (a) Low of VUC performance factors, especially aspects of the application of agricultural technology in increasing the efficiency and effectiveness of rice farming and the implementation of the RAT as a communication forum members in making decisions based on the farming interests of members, (b) Factors characteristic of a weak VUC personnel, especially non-formal education aspect in applying the principles of cooperatives as well as analysis of risks and responsibilities in the development of rice farming modernity VUC members and (c) Had not been effective factor VUC organizational communication processes, especially aspects of feedback information from and to VUC members.

3. By considering the level of performance and capacity of VUC in the Karawang District and Cianjur Districts as a whole was in a weak condition, this had resulted in low of VUC quality services in the utilization of VUC rice milling. Utilization of VUC rice mill in the Karawang District strongly influenced by social aspects, especially about the benefits of comfort and security while in Cianjur District was strongly influenced by economic aspects, especially concerning the benefits of the added value obtained by members of VUC. Social aspects in the Karawang District and economical aspects in Cianjur District could become a strategic consideration in the development of the utilization of rice mills as VUC business unit in order to develop agricultural mechanization in this region.

Recommendations

1. To enhance the role and functions of agricultural cooperation with the performance, capacity and VUC service quality required an increasingly professional training and development concept VUC by applying two-way communication and convergent with the support of the development model of cooperative organizational communication. In the development of cooperation organizational communication model for considering the factors that affected it dominant namely (a) The completeness of the information relevant to the needs of farmers in building a more modern farming work, (b) Supporting and confidence of the VUC, (c) The characteristics of members who increasingly understand cooperative principles and organizational communication process more interactive and convergent in the efforts to accelerate adoption of appropriate agricultural technology innovation through cooperatives in the countryside.
2. To build a professional cooperative of farmers and more modern farming needed support and commitment from governments, employers and farmers as a dynamic movement in anticipation of free trade which weakens the position of cooperatives and farmers. The eight factors or elements which consist of: VUC performance, VUC capacity, quality of cooperation services, the organization's information quality of VUC organizational communication climate, the intensity of public communication of VUC organization, personnel characteristics of VUC organization and communication processes were aspects that play an important role as a viable model developed in the Districts of Karawang and Cianjur.
3. The difference of the influence of the indicators contained in each element in organizational communication model VUC between Karawang and Cianjur District, to development more broadly to other areas couldnot be uniformity. Needed to first be tested in several areas of agribusiness development similar commodities by taking into account local characteristics for the results of this study could be optimally efficient for farmers in various production centers throughout Indonesia.

REFERENCES

- Adjid DA. 2001. *Building a Modern Agriculture*. Ray Farmer Development. Jakarta.
- Handaka. 1996. *Development of Agricultural Tools and Machines in Indonesia*. Proceedings of the National Seminar on Agricultural Techniques for Stimulating Contribution to Industrial Development in an Era of Globalization. Jakarta.
- Kusnendi. 2008. *Structural Equation Models; One and Multigroup Samples with LISREL*. Alfabeta. Bandung.
- AT Mosher. 1970. *Getting Agriculture Moving*. Frederick A. Praeger, Inc., Publisher. New York.
- Sinaga P. Aedah S, Subiyantoko A., 2008. *Cooperative Research in the Spotlight*. Rajagrafindo Persada. Jakarta.
- Sugiyono 2010. *Statistics for Research*. Alfabeta. Bandung
- Sumardjo. 1999. *Transformation of Agricultural Extension Model Development Towards Independence Farmers [dissertation]*. Graduate School, Bogor Agricultural University. Bogor.
- Tamba M. 2007. *Information Needs of Agriculture and Accessible For Vegetable Farmers: Agricultural Information Provision Model Development in Farmer Empowerment, The Case of West Java province [dissertation]*. Graduate School, Bogor Agricultural University. Bogor.
- T. Tambunan 2006. *Review Role of Cooperation in Support of Food Security*. Infokop No. 28 of XXII, 2006. Jakarta.
- Wijanto SH. 2008. *Structural Equation Modeling with LISREL 8.8*. Concepts and Tutorials. Graha Science. Yogyakarta.

Intentionally Blank